

Wilson Arch Water & Sewer SSD

PO Box 97

La Sal, UT 84530

www.wilsonarchwaterssd.org

Water project update, April 24, 2024

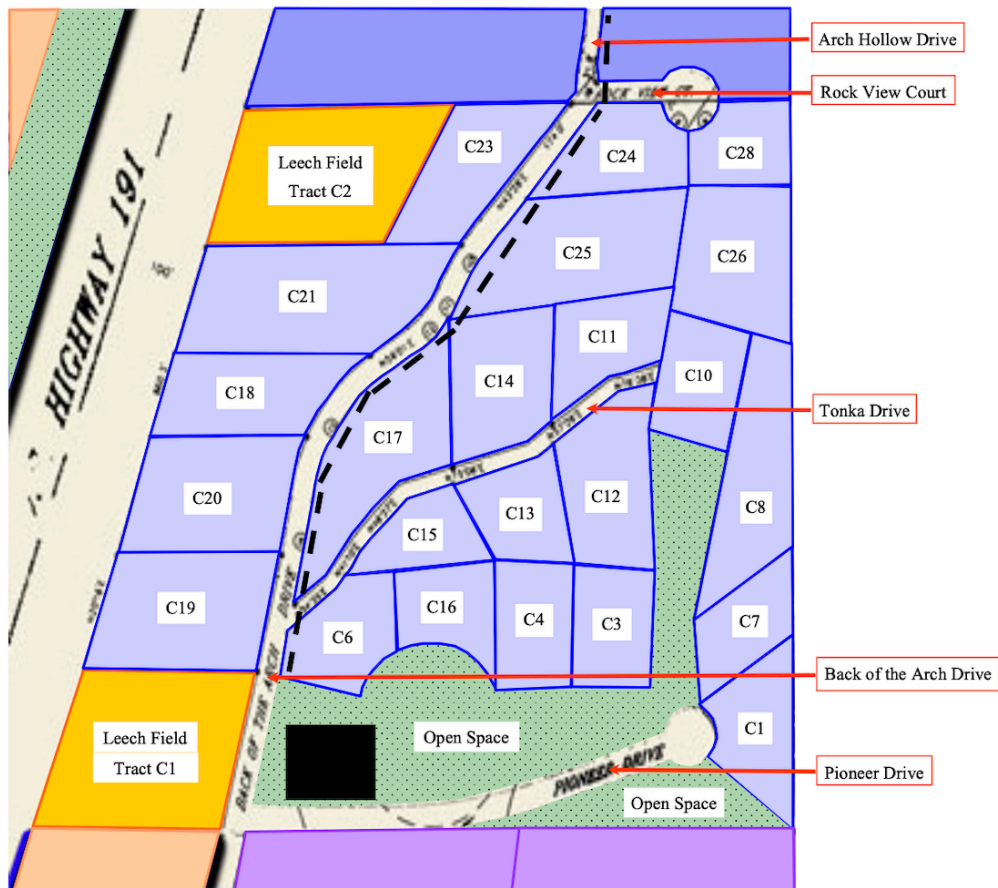
HMH Construction started the water project Tuesday, April 23. Staging areas were established on the east and west sides for equipment and pipes which is indicated by the black boxes and black dotted lines on the maps below.

The SSD will keep the Wilson Arch Community informed of progress on a weekly basis via the website, <https://www.wilsonarchwaterssd.org/>. All temporary or emergency water shut offs will be posted via email.

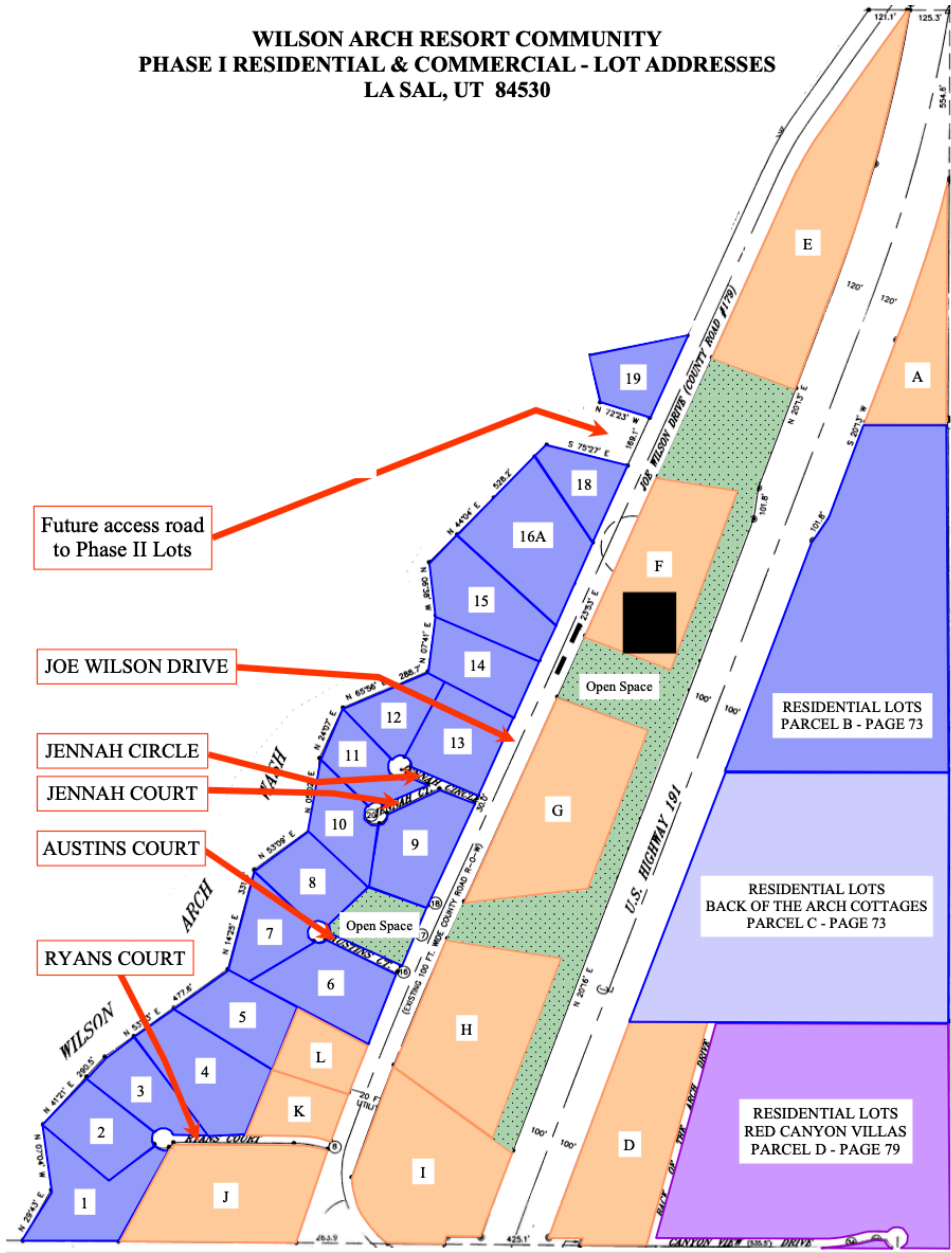
The chain of command has been established as follows:

- Questions regarding the water project are sent to bodwassd@gmail.com.
- The SSD board will relay messages at the biweekly meetings with Sunrise Engineering and HMH management.
- The SSD board will relay the answers to the questioner.
- In case of emergency, call Eric Linscheid 907-539-6829

BACK OF THE ARCH COTTAGES LA SAL, UT 84530



**WILSON ARCH RESORT COMMUNITY
 PHASE I RESIDENTIAL & COMMERCIAL - LOT ADDRESSES
 LA SAL, UT 84530**



Future access road
to Phase II Lots

JOE WILSON DRIVE

JENNAH CIRCLE

JENNAH COURT

AUSTINS COURT

RYANS COURT

RESIDENTIAL LOTS
PARCEL B - PAGE 73

RESIDENTIAL LOTS
BACK OF THE ARCH COTTAGES
PARCEL C - PAGE 73

RESIDENTIAL LOTS
RED CANYON VILLAS
PARCEL D - PAGE 79