

Wilson Arch Special Service District Water Improvements 2023

Wilson Arch Community, UT

2023

WILSON ARCH SPECIAL SERVICE DISTRICT

ERIC LINSCHIED.....CHAIRMAN

CRAIG SIMPSON.....BOARD MEMBER

ENGINEERING CONSULTANTS

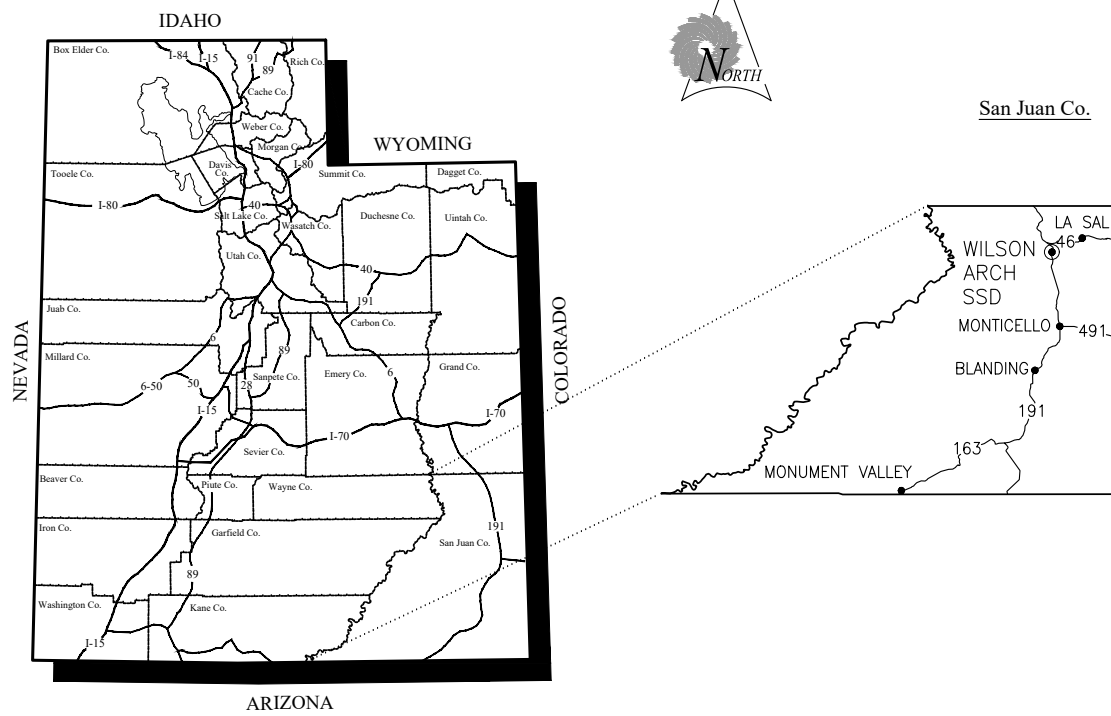
DEVAN SHIELDS.....PROJECT ENGINEER

KYLER LAROSE.....PROJECT MANAGER

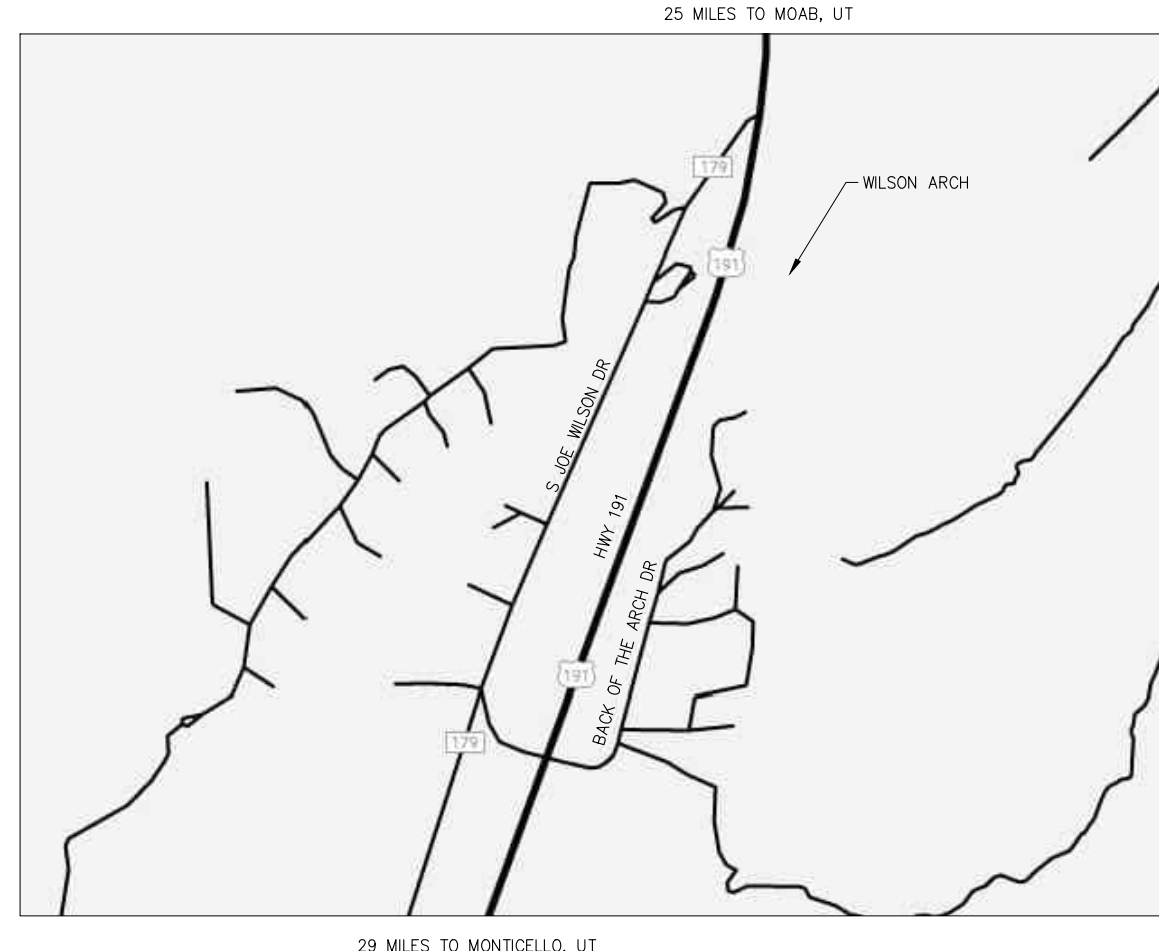


25 EAST 500 NORTH
FILLMORE, UTAH 84631
TEL 435.743.6151 • FAX 435.743.7900
sunrise-eng.com

AREA MAP

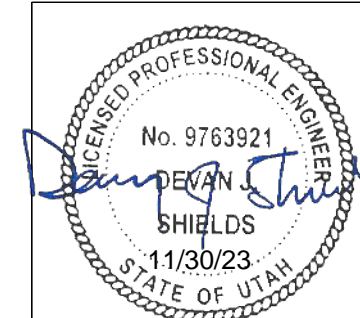


LOCATION MAP



SHEET INDEX

GENERAL	SHT NO.	DWG NO.
TITLE SHEET	01	G1
MAPS & SHEET INDEX	02	G2
LEGEND & ABBREVIATIONS	03	G3
CONSTRUCTION NOTES & DESIGN CRITERIA	04	G4
PIPE SHEET INDEX	05	G5
<u>PIPE SHEETS</u>		
PIPE SHEETS	06-11	P1-P6
<u>SITE PLAN SHEETS</u>		
EAST SITE PLAN	12	PS1
WEST SITE PLAN	13	TS1
TANK DETAILS	14-15	TD1-TD2
<u>TYPICAL DETAILS</u>		
TYPICAL DETAILS	16-18	D1-D3
<u>SCADA SHEETS</u>		
LEGEND	19	LEGEND
WEST SIDE	20	SCADA1
EAST SIDE	21	SCADA2



REV NO.	COMMENT	DATE

SUNRISE ENGINEERING					
635 NORTH MAIN, SUITE 675 RICHFIELD, UTAH 84701 TEL 435.896.8857 www.sunrise-eng.com					
WILSON ARCH WATER & SEWER SSD					
WILSON ARCH WATER PROJECT 2023 MAPS & SHEET INDEX					
SEI NO. 09132	DESIGNED DS	DRAWN KL	CHECKED CS	SHEET NO. 2	G2

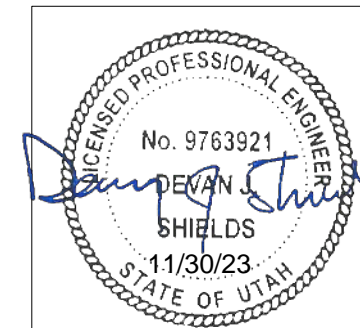
\\SEIFLW2\Projects\Wilson Arch SSD\09132-Wilson Arch Water Project 2023\DWG\Sheets\WASSD 2023 Water Improvements - C.dwg Nov 29, 2023 8:22am Harose

LEGEND

CROSS REFERENCING	—DETAIL DESIGNATION —DRAWING NUMBER
EXIST. MAJOR CONTOURS	— — — — —
EXIST. MINOR CONTOURS	- - - - -
EXIST. EDGE OF ASPHALT	-----
EXIST. EDGE OF DIRT ROAD	-----
EXIST. UNDER GROUND ELECTRIC	--- uge ---
EXIST. FIBER OPTIC/PHONE LINE	--- t ---
EXIST. CULINARY WATER PIPELINE	--- x" w ---
RIGHT-OF-WAY	-----
PROPERTY LINES	-----
CULINARY WATER PIPELINE	— x" w —
EXIST. TEE	
EXIST. BEND	
EXIST. GATE VALVE	
EXIST. AIR VALVE	
EXIST. FIRE HYDRANT	
EXIST. WATER SERVICE	
EXIST. TELEPHONE PEDESTAL	
EXIST. ELECTRICAL JUNCTION BOX	
EXIST. WATER SPIGOT	
TEE	
BEND	
REDUCER	
RESTRAINED BLIND FLANGE	
FIRE HYDRANT ASSEMBLY	
GATE VALVE	
COMBINATION AIR/VACUUM VALVE	
WATER SERVICE ASSEMBLY	
HIGHWAY BORE	

ABBREVIATIONS

<p>⊙ - AT (MEASUREMENTS) AB - ANCHOR BOLT AC - ACRES ACI - AMERICAN CONCRETE INSTITUTE ADDNL - ADDITIONAL AISC - AMERICAN INSTITUTE OF STEEL CONSTRUCTION ALT - ALTERNATE ALUM - ALUMINUM APPROX - APPROXIMATELY ASSY - ASSEMBLY ASTM - AMERICAN SOCIETY FOR TESTING MATERIALS AVG - AVERAGE</p> <p>BD - BOARD BDRY - BOUNDARY BEG - BEGINNING B.F. - BLIND FLANGE BLDG - BUILDING BLM - BUREAU OF LAND MANAGEMENT B.M. - BENCH MARK BOT/BTM - BOTTOM BSC - BITUMINOUS SURFACE COURSE BTU - BRITISH THERMAL UNITS BTV - BUTTERFLY VALVE BV - BALL VALVE B.W. - BOTH WAYS</p> <p>⊕ - CENTER LINE C - CHANNEL (STRUCTURAL) CALC - CALCULATED CFM - CUBIC FEET PER MINUTE CFS - CUBIC FEET PER SECOND C&G - CURB AND GUTTER CI - CAST IRON CIP - CAST IRON PIPE CLR - CLEAR CMP - CORRUGATED METAL PIPE CMU - CONCRETE MASONRY UNIT CO - CLEAN OUT CONC - CONCRETE CONT - CONTINUOUS CONTR - CONTRACTOR COR - CORNER CPLG - COUPLING CU FT - CUBIC FEET CU YD - CUBIC YARDS CV - CHECK VALVE</p> <p>DEG OR ° - DEGREE DET - DETAIL DIA OR ∅ - DIAMETER DIAG - DIAGONAL DIM - DIMENSION DIP - DUCTILE IRON PIPE DIST - DISTRIBUTION DN - DOWN D.O.E. - DEPARTMENT OF ENERGY DWG - DRAWING</p> <p>E - EAST EA - EACH E.F. - EACH FACE EL/ELEV - ELEVATION ELEC - ELECTRIC ELL - ELBOW ENGR - ENGINEER EO - EDGE OF OIL E.W. - EACH WAY EQ - EQUAL EQUIP - EQUIPMENT EXIST - EXISTING</p>	<p>℄ - FLOW LINE F.D. - FLOOR DRAIN FF - FINISH FLOOR FG - FINISH GRADE FLEX - FLEXIBLE FLG/FLNG - FLANGE FND - FOUNDATION FRP - FIBRE-REINFORCED PLASTIC FT OR ' - FEET FTG - FOOTING</p> <p>G - GAS GA - GAGE/GAUGE GALV - GALVANIZED GM - GAS METER GPM - GALLONS PER MINUTE GSN - GENERAL STRUCTURAL NOTES GSP - GALVANIZED STEEL PIPE G.V. - GATE VALVE GYP - GYPSUM</p> <p>HDWD - HARDWOOD HM - HOLLOW METAL HORIZ - HORIZONTAL HV - HOSE VALVE H.W.L. - HIGH WATER LEVEL HWY - HIGHWAY</p> <p>ID - INSIDE DIAMETER IN OR " - INCH INFO - INFORMATION INSUL - INSULATION INV - INVERT IRR - IRRIGATION</p> <p>J.B. - JUNCTION BOX JT - JOINT</p> <p>L - LENGTH LB - POUND LF/LN FT - LINEAL FEET LN - LINEAL/LINEAR LWL - LOW WATER LEVEL</p> <p>MATL - MATERIAL MAX - MAXIMUM MECH - MECHANICAL MFG - MANUFACTURING MFR - MANUFACTURER MGD - MILLIONS OF GALLONS PER DAY MH - MANHOLE MI - MILE MIN - MINIMUM MISC - MISCELLANEOUS MJ - MECHANICAL JOINT MPH - MILES PER HOUR</p> <p>N - NORTH NO. OR # - NUMBER NTS OR N.T.S. - NOT TO SCALE</p> <p>OC - ON CENTER O.D. - OUTSIDE DIAMETER OHE - OVERHEAD ELECTRIC OSB - ORIENTED STRAND BOARD</p>	<p>ℙ - PROPERTY LINE PE - POLYETHYLENE PERP - PERPENDICULAR PG - PRESSURE GAUGE PL - PLATE POB - POINT OF BEGINNING PROP - PROPERTY PRV - PRESSURE REDUCING VALVE PSI - POUNDS PER SQUARE INCH PV - PLUG VALVE PVC - POLYVINYL-CHLORIDE PIPE</p> <p>R - RADIUS/RANGE RDWD - REDWOOD REBAR - REINFORCING BARS RED - REDUCER REINF - REINFORCING REM - REMOVE REQ'D - REQUIRED REV - REVISION R/W - RIGHT-OF-WAY</p> <p>S - SOUTH/SEWER SCH - SCHEDULE SD - STORM DRAIN SEC - SECTION SHT - SHEET SL - SLOPE SLM - SALT LAKE MERIDIAN SPEC - SPECIFICATION SQ - SQUARE SQ. IN. - SQUARE INCHES SQ. FT. - SQUARE FEET SQ. YD. - SQUARE YARDS STA - STATION STD - STANDARD ST. STL. - STAINLESS STEEL STL - STEEL SYM - SYMMETRICAL</p> <p>T - TELEPHONE/TOWNSHIP TBC - TOP BACK OF CURB TOC - TOP OF CONCRETE TOW - TOP OF WALL TP - TEST PIT TRANS - TRANSITION TYP - TYPICAL</p> <p>UBC - UNTREATED BASE COURSE UDOT - UTAH DEPARTMENT OF TRANSPORTATION U.N.O. - UNLESS NOTED OTHERWISE</p> <p>VERT - VERTICAL VOL - VOLUME</p> <p>W - WEST/WATER WI - WROUGHT IRON WM - WATER METER W/ - WITH W/O - WITHOUT W/REQ'D - WHERE REQUIRED WS - WATER SURFACE WT - WEIGHT</p> <p>XING - CROSSING X-SEC - CROSS SECTION</p>
---	--	--



REV NO.	COMMENT	DATE

SUNRISE ENGINEERING

635 NORTH MAIN, SUITE 675
 RICHFIELD, UTAH 84701
 TEL 435.896.8857
 www.sunrise-eng.com

WILSON ARCH WATER & SEWER SSD
 WILSON ARCH WATER PROJECT
 2023
 LEGEND & ABBREVIATIONS

SEI NO. 09132	DESIGNED DS	DRAWN KL	CHECKED CS	SHEET NO. 3	G3
------------------	----------------	-------------	---------------	----------------	-----------

CONSTRUCTION NOTES

1. ALL LINES SHALL BE INSTALLED AT THE LOCATIONS AND DEPTHS REQUIRED BY THE CONSTRUCTION DRAWINGS AND PROJECT SPECIFICATIONS OR AS OTHERWISE DIRECTED BY THE ENGINEER. THE CONTRACTOR SHALL NOT MOVE THE PLANNED ALIGNMENT OF ANY PIPELINE WITHOUT THE WRITTEN CONSENT OF BOTH THE OWNER AND THE ENGINEER.
2. ALL CONSTRUCTION WORK SHALL BE PERFORMED WITHIN EXISTING RIGHTS-OF-WAY OR RIGHTS-OF-WAY OBTAINED BY THE OWNER FOR CONSTRUCTION PURPOSES.
3. ALL PIPE SHALL BE PLACED WITH A MINIMUM OF 4'-0" COVER OVER THE TOP OF THE PIPE.
4. AN EFFORT HAS BEEN MADE TO SHOW THE EXISTING SYSTEM AND THE PROPOSED IMPROVEMENTS AS ACCURATELY AS POSSIBLE. ALL PIPELINE LOCATIONS AND SIZES ARE SHOWN ACCORDING TO THE INFORMATION AVAILABLE TO THE ENGINEER. HOWEVER, THE ACTUAL FIELD CONDITIONS MAY VARY. ADDITIONAL WORK MAY BE REQUIRED AND LIKewise PROPOSED WORK MAY BE ELIMINATED BASED ON ACTUAL FIELD CONDITIONS. THE ADDITION OR ELIMINATION OF WORK SHALL BE DECIDED BY THE OWNER.
5. ALL DEBRIS RESULTING FROM WORK ON THE PROJECT SHALL BE DISPOSED OF BY THE CONTRACTOR. CONTRACTOR SHALL MAKE APPROPRIATE ARRANGEMENTS FOR DISPOSAL SITES AT WHICH DEBRIS MAY BE LAWFULLY DISPOSED. NO CONSTRUCTION DEBRIS WILL BE BURIED IN THE PIPELINE TRENCH.
6. THE CONTRACTOR SHALL MAKE ALL CONNECTIONS TO EXISTING LINES WHERE SHOWN ON THE PLANS AND AS NEEDED TO OBTAIN A FULLY FUNCTIONAL SYSTEM.
7. THE INSTALLATION OF VARIABLE SIZED OPENINGS IN TEES, ELBOWS, CROSSES, ETC. WHERE APPLICABLE IS AN ACCEPTABLE ALTERNATIVE TO THE USE OF REDUCERS. THE INSTALLATION OF TWO TEES IS AN ACCEPTABLE ALTERNATIVE TO THE USE OF A CROSS.
8. ANY CANAL OR DITCH CROSSINGS NOT SPECIFICALLY CALLED OUT ON THE PLANS ARE CONSIDERED INCIDENTAL TO THE INSTALLATION OF THE PIPELINE, AND SHALL NOT BE PAID FOR SEPARATELY.
9. FITTINGS REQUIRED FOR NEW PIPELINE CONNECTIONS, PIPELINE ABANDONMENT, OR AT OTHER PROJECT LOCATIONS BEYOND THOSE SHOWN ON THE DRAWINGS SHALL BE THE RESPONSIBILITY OF THE CONTRACTOR.
10. THE CONTRACTOR SHALL PROVIDE MEANS OF MANAGING ANY STORM WATER, GROUNDWATER, OR NUISANCE WATER FROM INTERFERING WITH THE CONSTRUCTION OPERATION.
11. ALL DAMAGE TO EXISTING ROADWAYS OTHER THAN THAT WHICH IS REPLACED AS PART OF THE CONSTRUCTION PROCESS, SHALL BE REPLACED OR REPAIRED.
12. THE CONTRACTOR SHALL CAP ABANDONED PIPELINES AS CLOSE AS POSSIBLE TO THE MAIN PIPELINE TO BE LEFT IN SERVICE.
13. ALL FENCING DISTURBED DURING THE PROJECT SHALL BE REPAIRED TO MATCH FENCING PRIOR TO CONSTRUCTION.
14. CONTRACTOR SHALL CONTACT AND IMPLEMENT BLUE STAKES PRIOR TO DIGGING. CONTRACTOR SHALL MAKE EVERY EFFORT TO AVOID DAMAGE TO EXISTING UTILITIES. CONTRACTOR SHALL REPAIR ANY DAMAGE TO EXISTING MARKED UTILITIES AT HIS OWN COST. UTILITY OWNER SHALL COMPENSATE CONTRACTOR FOR REPAIR TO ANY UNMARKED UTILITY THAT MAY BE DAMAGED AS LONG AS BLUE STAKES PROTOCOL HAS BEEN FOLLOWED.
15. PROJECT SHALL CONFORM TO THE BUILD AMERICA, BUY AMERICA (BABAA) ACT SECTION 70914 P.L. 117-58, §§ 70901-52

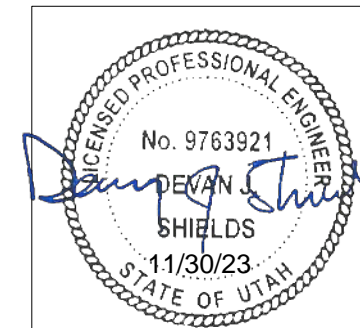
DESIGN CRITERIA

THE WILSON ARCH WATER PROJECT WILL INCLUDE THE INSTALLATION OF APPROXIMATELY 2100 FEET OF NEW 8" PVC PIPE TO CONNECT THE EAST SIDE OF THE WILSON ARCH SSD SYSTEM TO THE WEST SIDE. APPROXIMATELY 600 FEET OF NEW 4" PVC PIPE WILL ALSO BE INSTALLED. NEW FIRE HYDRANTS WILL BE INSTALLED ALONG THE NEW 8" PIPELINE, AND ALL EXISTING WATER CONNECTIONS WILL BE EQUIPPED WITH NEW RESIDENTIAL WATER METERS.

THE PROJECT ALSO INCLUDES THE INSTALLATION OF A NEW 30,000 GALLON FIBERGLASS WATER STORAGE TANK. THE BOOSTER PUMP ON THE EAST SIDE WILL BE REPLACED WITH A NEW BOOSTER PUMP OF SIMILAR SIZE, AND A REDUNDANT PUMP WILL BE ADDED TO THE SYSTEM IN PARALLEL.

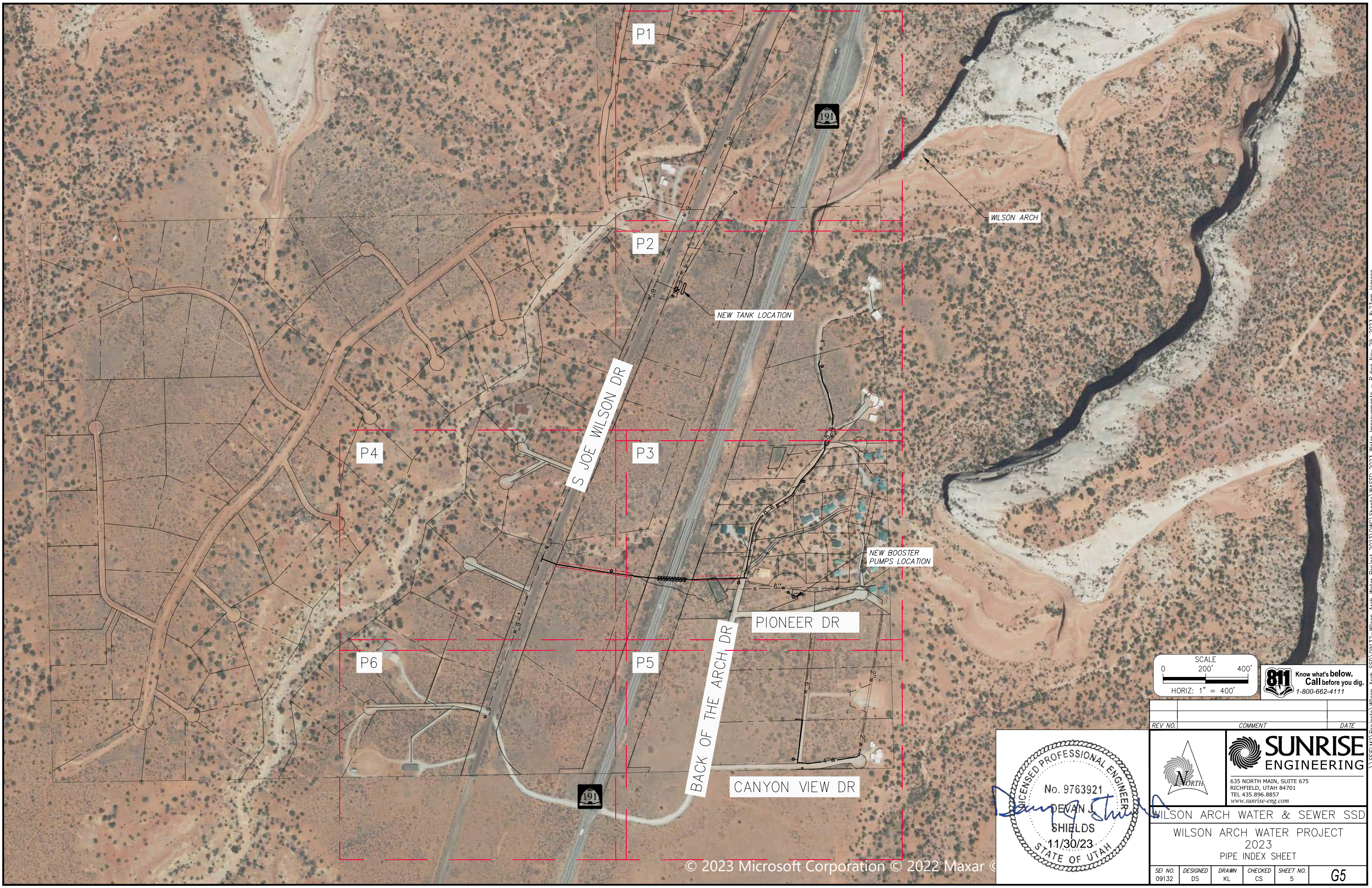
THE EAST TANK SITE AND THE WEST WELL SITE WILL BE EQUIPPED WITH SCADA FOR SYSTEM MONITORING AND CONTROL.

THE NEED FOR THIS PROJECT WAS BASED ON THE FINDINGS MADE IN A CULINARY WATER SYSTEM MASTER PLAN IN JULY 2022

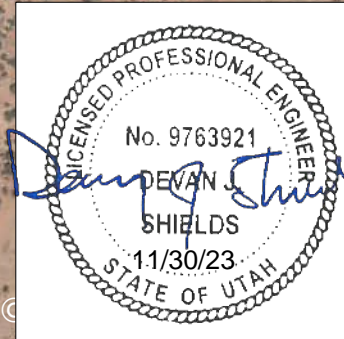
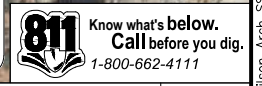
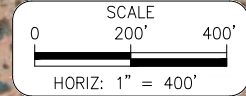


REV. NO.	COMMENT	DATE
SUNRISE ENGINEERING 635 NORTH MAIN, SUITE 675 RICHFIELD, UTAH 84701 TEL 435.896.8857 www.sunrise-eng.com		
WILSON ARCH WATER & SEWER SSD WILSON ARCH WATER PROJECT 2023 CONSTRUCTION NOTES & DESIGN CRITERIA		
SEI NO. 09132	DESIGNED DS	DRAWN KL
CHECKED CS	SHEET NO. 4	G4

\\SEIFLW2\Projects\Wilson Arch SSD\09132-Wilson Arch Water Project 2023\DWG\Sheets\WASSD 2023 Water Improvements - C.dwg Nov 29, 2023 8:22am Rlarose



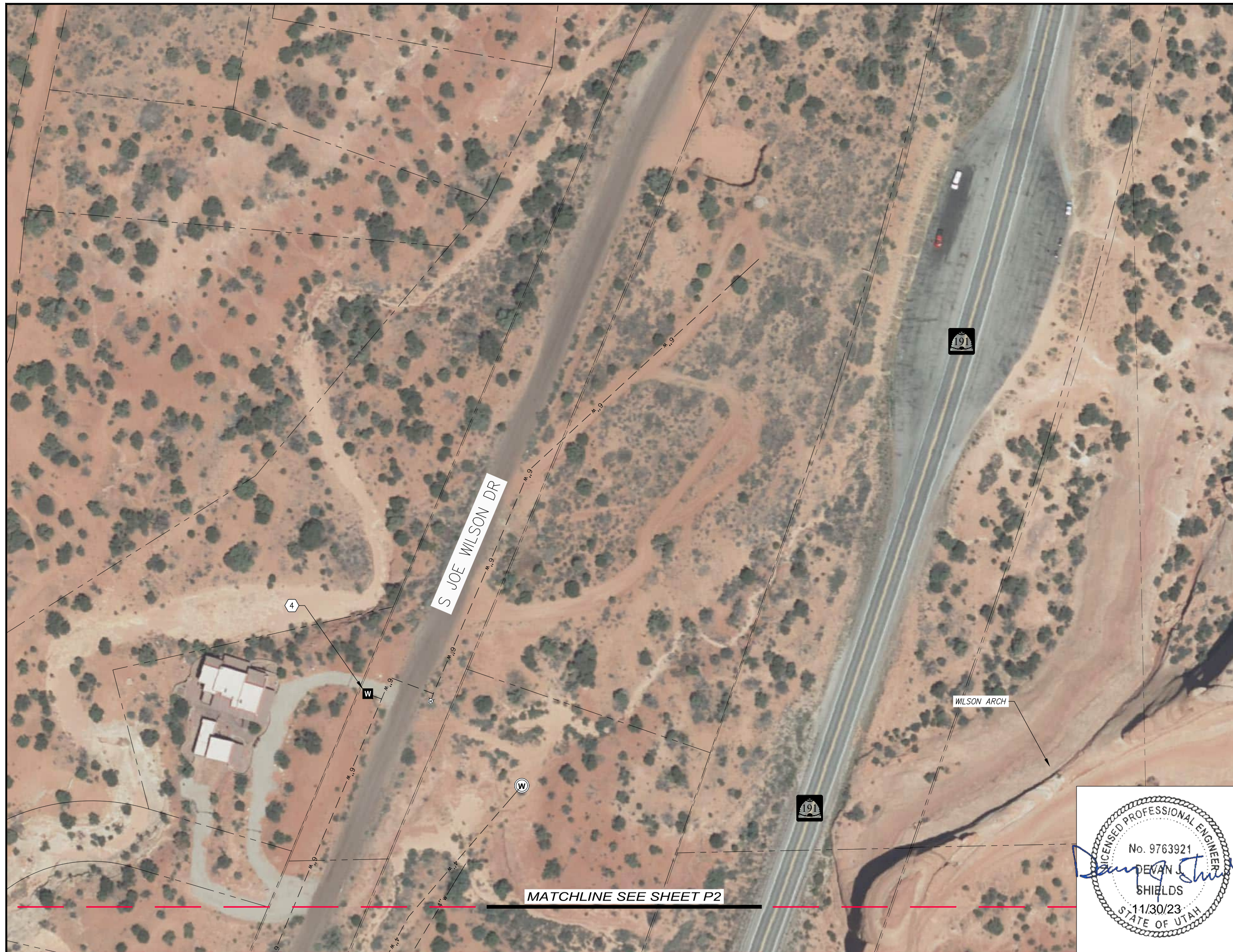
© 2023 Microsoft Corporation © 2022 Maxar



REV NO.	COMMENT	DATE

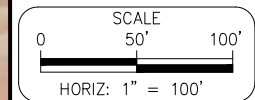
SUNRISE ENGINEERING 635 NORTH MAIN, SUITE 675 RICHFIELD, UTAH 84701 TEL 435.896.8857 www.sunrise-eng.com					
WILSON ARCH WATER & SEWER SSD WILSON ARCH WATER PROJECT 2023 PIPE INDEX SHEET					
SEI NO. 09132	DESIGNED DS	DRAWN KL	CHECKED CS	SHEET NO. 5	G5

\\SEIFLW2\Projects\Wilson Arch SSD\09132-Wilson Arch Water Project 2023\DWG\Sheets\WASSD 2023 Water Improvements - P.dwg Nov 29, 2023 8:25am Blarose



CONSTRUCTION NOTES

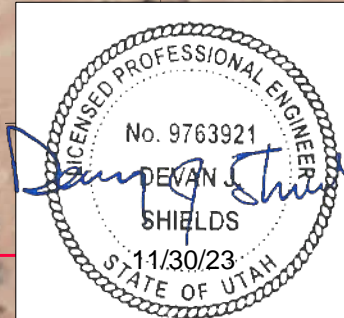
- ① PVC C900 DR18 WATERLINE, SIZE AS NOTED. TRENCH CONSTRUCTION SHALL BE IN ACCORDANCE WITH DETAILS A, B, C, D, & E, SHEET D1.
- ② GATE VALVE, SIZE SHALL MATCH PIPE DIAMETER, SEE DETAIL B, SHEET D2.
- ③ CONNECT TO EXISTING WATERLINE. ALL FITTINGS SHALL BE CONSIDERED INCIDENTAL.
- ④ INSTALL NEW RESIDENTIAL WATER METER, SEE DETAIL C, SHEET D2.
- ⑤ RECONNECT EXISTING WATER SERVICE, SEE DETAIL E, SHEET D2.
- ⑥ CAP AND ABANDON EXISTING PIPELINE.
- ⑦ REMOVE AND REPLACE FENCE, SEE DETAIL D, SHEET D2.
- ⑧ NEW FIRE HYDRANT, SEE DETAIL A, SHEET D2.
- ⑨ RECONNECT EXISTING HYDRANT, SEE DETAIL F, SHEET D2.



REV NO.	COMMENT	DATE



SUNRISE ENGINEERING
 635 NORTH MAIN, SUITE 675
 RICHFIELD, UTAH 84701
 TEL 435.896.8857
 www.sunrise-eng.com



WILSON ARCH WATER & SEWER SSD
 WILSON ARCH WATER PROJECT
 2023
 PIPE SHEETS

SEI NO.	DESIGNED	DRAWN	CHECKED	SHEET NO.	
09132	DS	KL	CS	6	P1

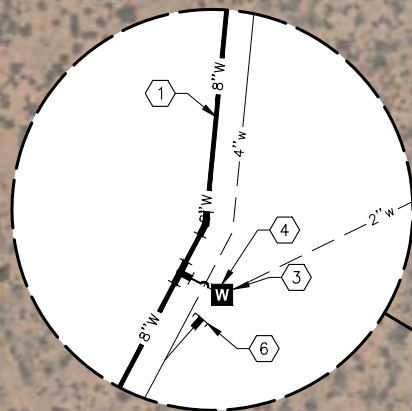
\\SEIFLW2\Projects\Wilson Arch SSD\09132-Wilson Arch Water Project 2023\DWG\Sheets\WASSD 2023 Water Improvements - P.dwg Dec 04, 2023 9:39am Rlarose

MATCHLINE SEE SHEET P1

MATCHLINE SEE SHEET P3

PROPOSED NEW TANK LOCATION

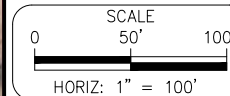
WEST WELL SITE



BACK OF THE ARCH DR

CONSTRUCTION NOTES

- ① PVC C900 DR18 WATERLINE, SIZE AS NOTED. TRENCH CONSTRUCTION SHALL BE IN ACCORDANCE WITH DETAILS A, B, C, D, & E, SHEET D1.
- ② GATE VALVE, SIZE SHALL MATCH PIPE DIAMETER, SEE DETAIL B, SHEET D2.
- ③ CONNECT TO EXISTING WATERLINE. ALL FITTINGS SHALL BE CONSIDERED INCIDENTAL.
- ④ INSTALL NEW RESIDENTIAL WATER METER, SEE DETAIL C, SHEET D2.
- ⑤ RECONNECT EXISTING WATER SERVICE, SEE DETAIL E, SHEET D2.
- ⑥ CAP AND ABANDON EXISTING PIPELINE.
- ⑦ REMOVE AND REPLACE FENCE, SEE DETAIL D, SHEET D2.
- ⑧ NEW FIRE HYDRANT, SEE DETAIL A, SHEET D2.
- ⑨ RECONNECT EXISTING HYDRANT, SEE DETAIL F, SHEET D2.

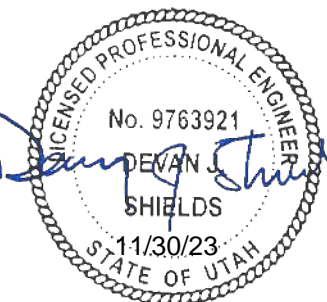


REV NO.	COMMENT	DATE



SUNRISE ENGINEERING

635 NORTH MAIN, SUITE 675
RICHFIELD, UTAH 84701
TEL 435.896.8857
www.sunrise-eng.com



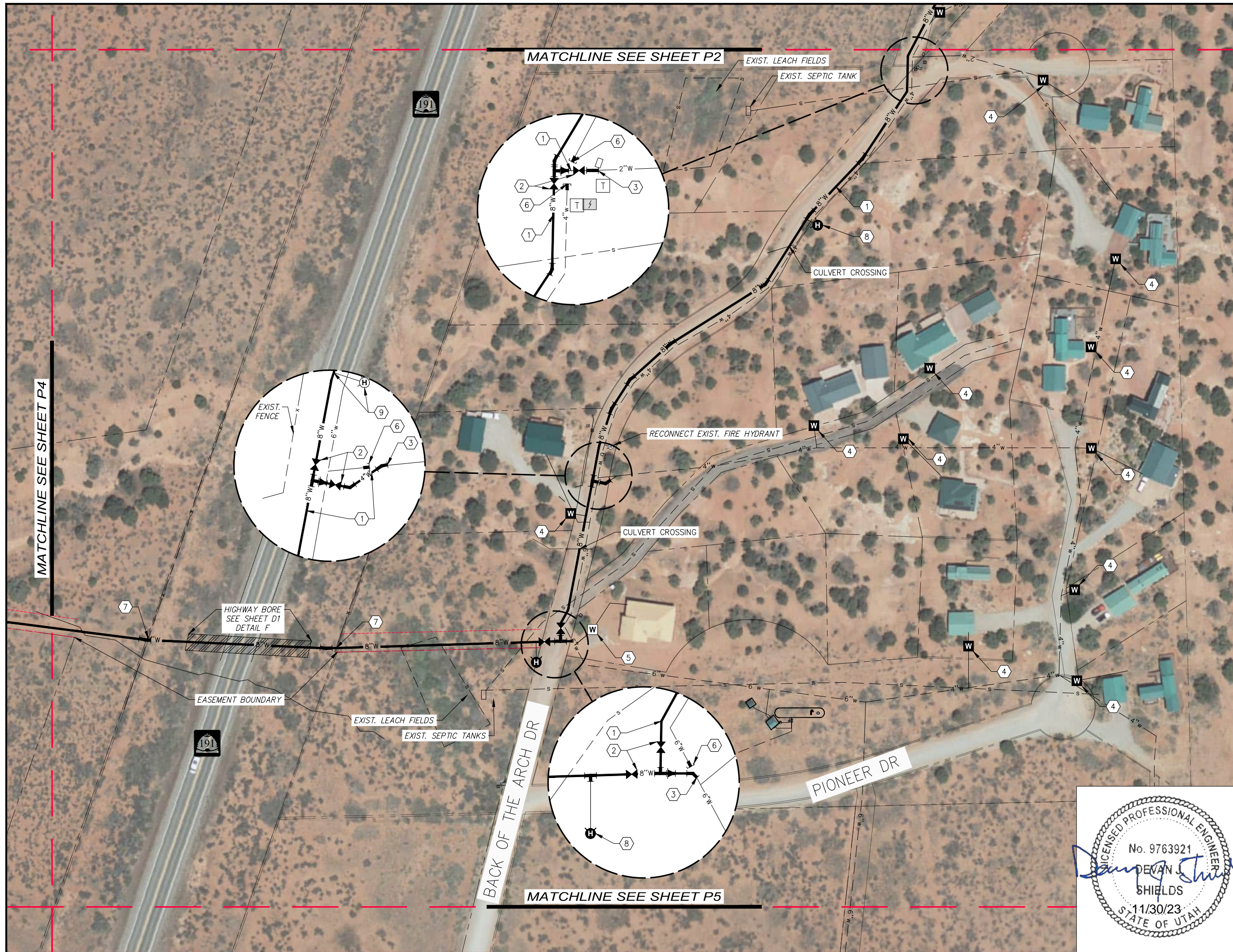
WILSON ARCH WATER & SEWER SSD

WILSON ARCH WATER PROJECT
2023
PIPE SHEETS

SEI NO.	DESIGNED	DRAWN	CHECKED	SHEET NO.
09132	DS	KL	CS	7

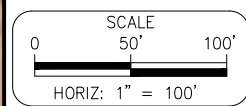
P2

\\SEIFLW2\Projects\Wilson Arch SSD\09132-Wilson Arch Water Project 2023\DWG\Sheets\WASSD 2023 Water Improvements - P.dwg Dec 04, 2023 9:40am Rlarose

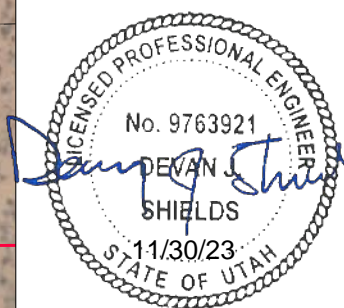


CONSTRUCTION NOTES

- ① PVC C900 DR18 WATERLINE, SIZE AS NOTED. TRENCH CONSTRUCTION SHALL BE IN ACCORDANCE WITH DETAILS A, B, C, D, & E, SHEET D1.
- ② GATE VALVE, SIZE SHALL MATCH PIPE DIAMETER, SEE DETAIL B, SHEET D2.
- ③ CONNECT TO EXISTING WATERLINE. ALL FITTINGS SHALL BE CONSIDERED INCIDENTAL.
- ④ INSTALL NEW RESIDENTIAL WATER METER, SEE DETAIL C, SHEET D2.
- ⑤ RECONNECT EXISTING WATER SERVICE, SEE DETAIL E, SHEET D2.
- ⑥ CAP AND ABANDON EXISTING PIPELINE.
- ⑦ REMOVE AND REPLACE FENCE, SEE DETAIL D, SHEET D2.
- ⑧ NEW FIRE HYDRANT, SEE DETAIL A, SHEET D2.
- ⑨ RECONNECT EXISTING HYDRANT, SEE DETAIL F, SHEET D2.



REV NO.	COMMENT	DATE

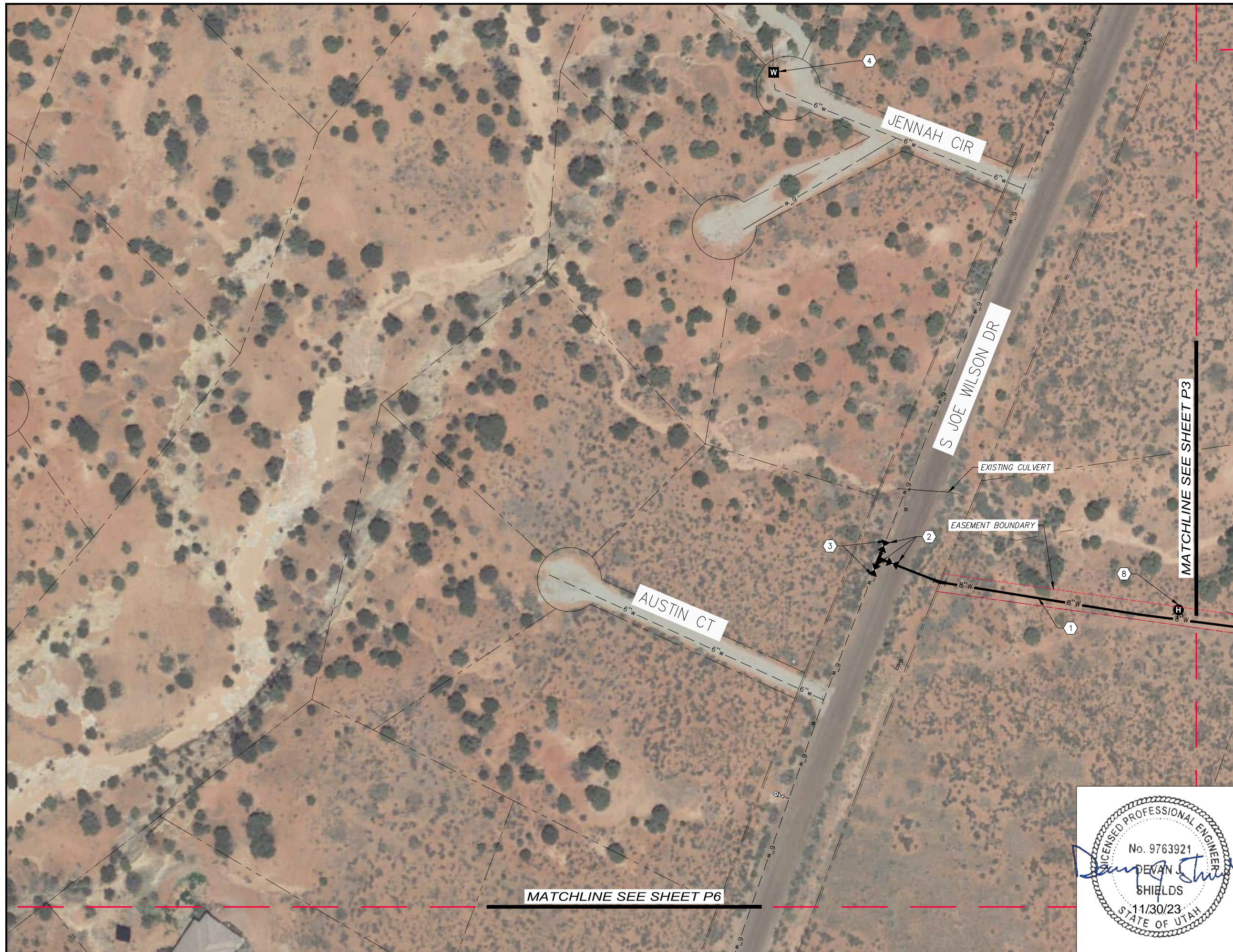


SUNRISE ENGINEERING
 635 NORTH MAIN, SUITE 675
 RICHFIELD, UTAH 84701
 TEL 435.896.8857
 www.sunrise-eng.com

WILSON ARCH WATER & SEWER SSD
 WILSON ARCH WATER PROJECT
 2023
 PIPE SHEETS

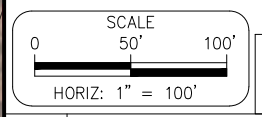
SEI NO.	DESIGNED	DRAWN	CHECKED	SHEET NO.	PAGE
09132	DS	KL	CS	8	P3

\\SEIFL2\Projects\Wilson Arch SSD\09132-Wilson Arch Water Project 2023\DWG\Sheets\WASSD 2023 Water Improvements - P.dwg Dec 04, 2023 9:40am Rkrose

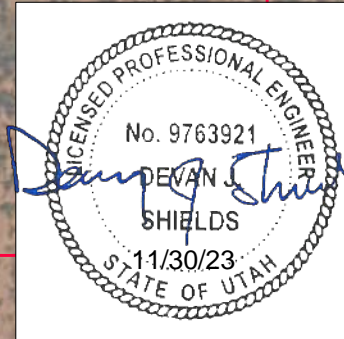


CONSTRUCTION NOTES

- ① PVC C900 DR18 WATERLINE, SIZE AS NOTED. TRENCH CONSTRUCTION SHALL BE IN ACCORDANCE WITH DETAILS A, B, C, D, & E, SHEET D1.
- ② GATE VALVE, SIZE SHALL MATCH PIPE DIAMETER, SEE DETAIL B, SHEET D2.
- ③ CONNECT TO EXISTING WATERLINE. ALL FITTINGS SHALL BE CONSIDERED INCIDENTAL.
- ④ INSTALL NEW RESIDENTIAL WATER METER, SEE DETAIL C, SHEET D2.
- ⑤ RECONNECT EXISTING WATER SERVICE, SEE DETAIL E, SHEET D2.
- ⑥ CAP AND ABANDON EXISTING PIPELINE.
- ⑦ REMOVE AND REPLACE FENCE, SEE DETAIL D, SHEET D2.
- ⑧ NEW FIRE HYDRANT, SEE DETAIL A, SHEET D2.
- ⑨ RECONNECT EXISTING HYDRANT, SEE DETAIL F, SHEET D2.



REV NO.	COMMENT	DATE



SUNRISE ENGINEERING
 635 NORTH MAIN, SUITE 675
 RICHFIELD, UTAH 84701
 TEL 435.896.8857
 www.sunrise-eng.com

WILSON ARCH WATER & SEWER SSD
 WILSON ARCH WATER PROJECT
 2023
 PIPE SHEETS

SEI NO. 09132	DESIGNED DS	DRAWN KL	CHECKED CS	SHEET NO. 9	P4
------------------	----------------	-------------	---------------	----------------	-----------

\\SEIFL2\Projects\Wilson Arch SSD\09132-Wilson Arch Water Project 2023\DWG\Sheets\WASSD 2023 Water Improvements - P.dwg Dec 04, 2023 9:40am Klorose

MATCHLINE SEE SHEET P3



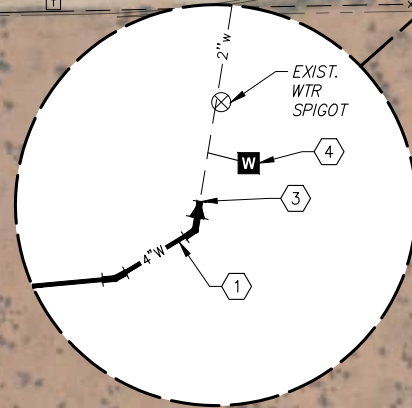
MATCHLINE SEE SHEET P6

BACK OF THE ARCH DR

CANYON VIEW DR

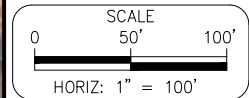
EXIST. WATER METER

EXIST. WATER SPIGOT



CONSTRUCTION NOTES

- 1 PVC C900 DR18 WATERLINE, SIZE AS NOTED. TRENCH CONSTRUCTION SHALL BE IN ACCORDANCE WITH DETAILS A, B, C, D, & E, SHEET D1.
- 2 GATE VALVE, SIZE SHALL MATCH PIPE DIAMETER, SEE DETAIL B, SHEET D2.
- 3 CONNECT TO EXISTING WATERLINE. ALL FITTINGS SHALL BE CONSIDERED INCIDENTAL.
- 4 INSTALL NEW RESIDENTIAL WATER METER, SEE DETAIL C, SHEET D2.
- 5 RECONNECT EXISTING WATER SERVICE, SEE DETAIL E, SHEET D2.
- 6 CAP AND ABANDON EXISTING PIPELINE.
- 7 REMOVE AND REPLACE FENCE, SEE DETAIL D, SHEET D2.
- 8 NEW FIRE HYDRANT, SEE DETAIL A, SHEET D2.
- 9 RECONNECT EXISTING HYDRANT, SEE DETAIL F, SHEET D2.



REV. NO.	COMMENT	DATE



SUNRISE ENGINEERING
 635 NORTH MAIN, SUITE 675
 RICHFIELD, UTAH 84701
 TEL 435.896.8857
 www.sunrise-eng.com

WILSON ARCH WATER & SEWER SSD
 WILSON ARCH WATER PROJECT
 2023
 PIPE SHEETS

SEI NO.	DESIGNED	DRAWN	CHECKED	SHEET NO.	
09132	DS	KL	CS	10	P5

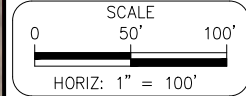


MATCHLINE SEE SHEET P4

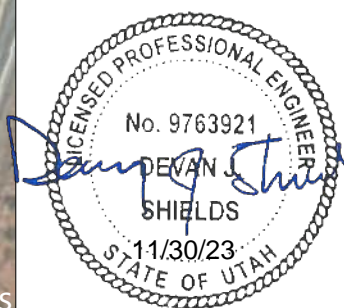
MATCHLINE SEE SHEET P5

CONSTRUCTION NOTES

- ① PVC C900 DR18 WATERLINE, SIZE AS NOTED. TRENCH CONSTRUCTION SHALL BE IN ACCORDANCE WITH DETAILS A, B, C, D, & E, SHEET D1.
- ② GATE VALVE, SIZE SHALL MATCH PIPE DIAMETER, SEE DETAIL B, SHEET D2.
- ③ CONNECT TO EXISTING WATERLINE. ALL FITTINGS SHALL BE CONSIDERED INCIDENTAL.
- ④ INSTALL NEW RESIDENTIAL WATER METER, SEE DETAIL C, SHEET D2.
- ⑤ RECONNECT EXISTING WATER SERVICE, SEE DETAIL E, SHEET D2.
- ⑥ CAP AND ABANDON EXISTING PIPELINE.
- ⑦ REMOVE AND REPLACE FENCE, SEE DETAIL D, SHEET D2.
- ⑧ NEW FIRE HYDRANT, SEE DETAIL A, SHEET D2.
- ⑨ RECONNECT EXISTING HYDRANT, SEE DETAIL F, SHEET D2.



REV. NO.	COMMENT	DATE



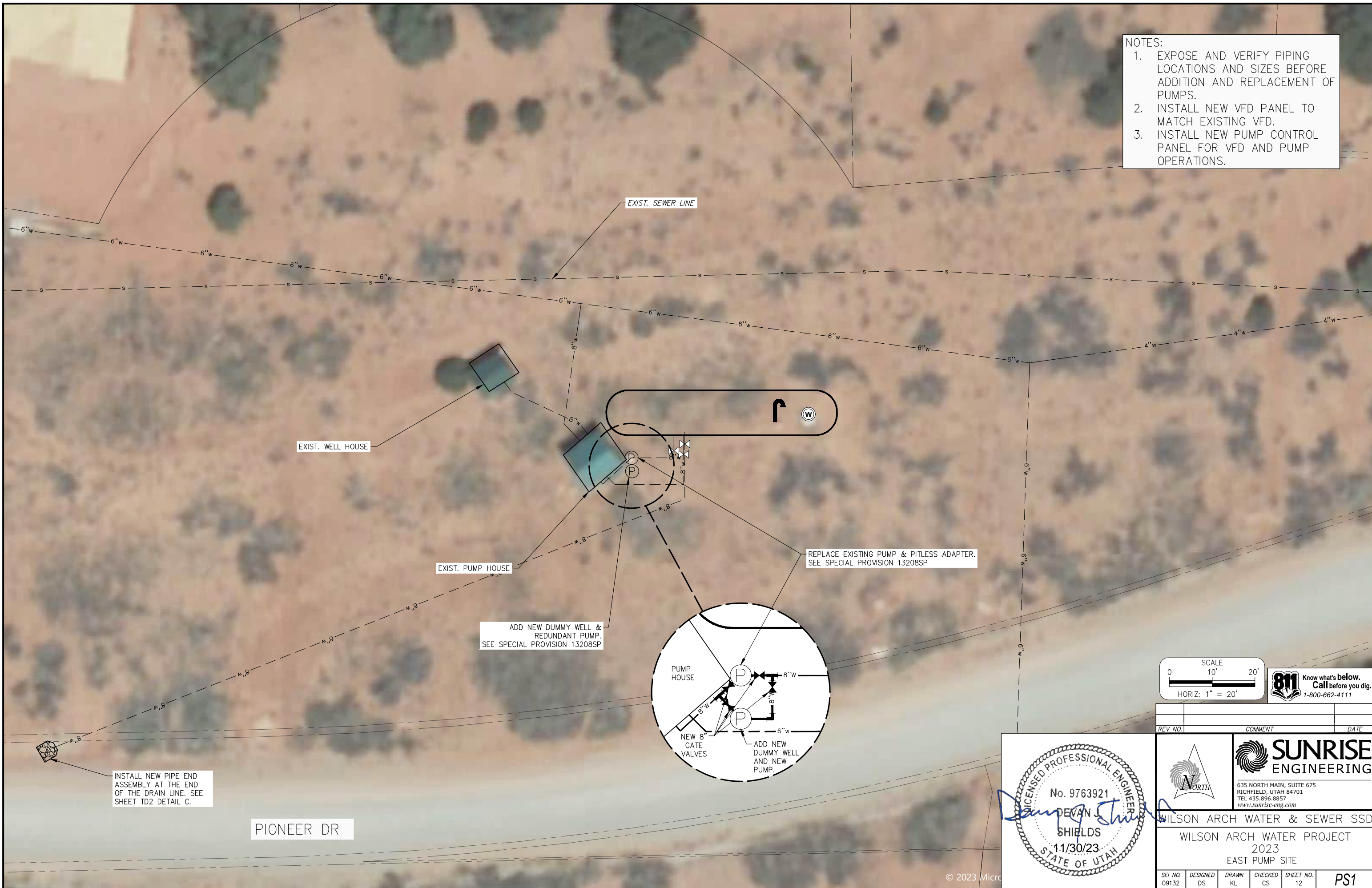
SUNRISE ENGINEERING
 635 NORTH MAIN, SUITE 675
 RICHFIELD, UTAH 84701
 TEL 435.896.8857
 www.sunrise-eng.com

WILSON ARCH WATER & SEWER SSD
 WILSON ARCH WATER PROJECT
 2023
 PIPE SHEETS

SEI NO.	DESIGNED	DRAWN	CHECKED	SHEET NO.	PAGE
09132	DS	KL	CS	11	P6

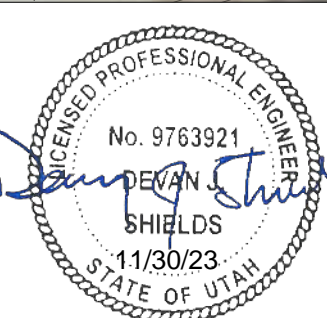
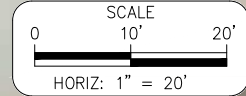
\\SEIFLW2\Projects\Wilson Arch SSD\09132-Wilson Arch Water Project 2023\DWG\Sheets\WASSD 2023 Water Improvements - P.dwg Dec 04, 2023 9:40am Klorose

- NOTES:
1. EXPOSE AND VERIFY PIPING LOCATIONS AND SIZES BEFORE ADDITION AND REPLACEMENT OF PUMPS.
 2. INSTALL NEW VFD PANEL TO MATCH EXISTING VFD.
 3. INSTALL NEW PUMP CONTROL PANEL FOR VFD AND PUMP OPERATIONS.



INSTALL NEW PIPE END ASSEMBLY AT THE END OF THE DRAIN LINE. SEE SHEET TD2 DETAIL C.

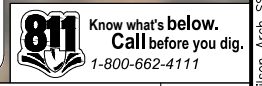
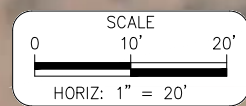
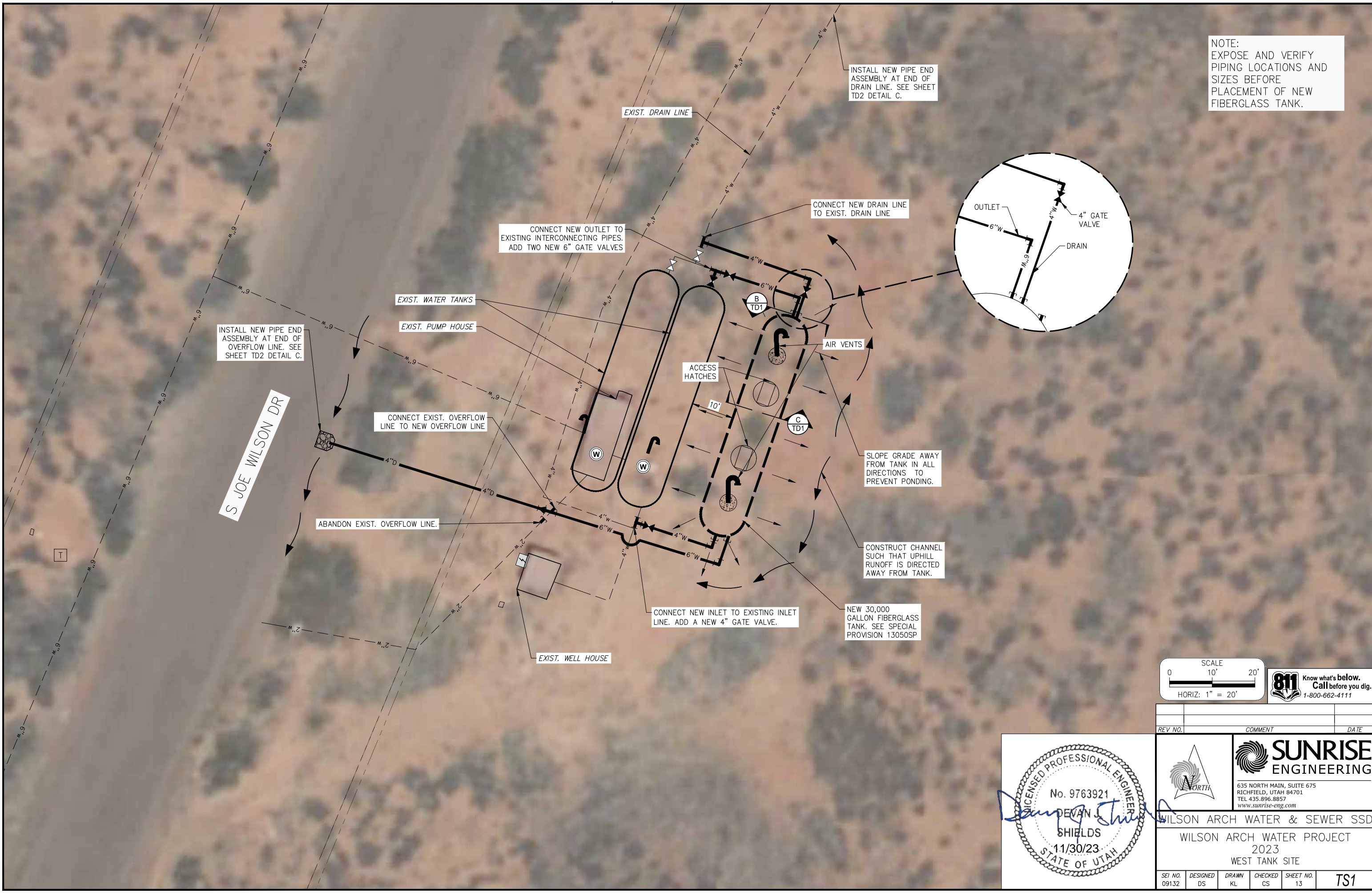
PIONEER DR



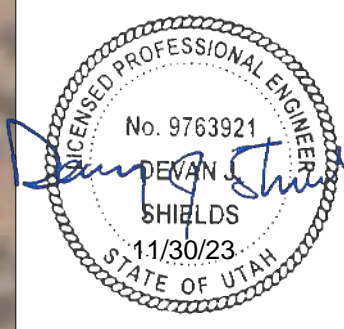
REV NO.	COMMENT	DATE

<p>SUNRISE ENGINEERING 635 NORTH MAIN, SUITE 675 RICHFIELD, UTAH 84701 TEL 435.896.8857 www.sunrise-eng.com</p>	<p>WILSON ARCH WATER & SEWER SSD</p>	
	<p>WILSON ARCH WATER PROJECT 2023 EAST PUMP SITE</p>	
<p>SEI NO. 09132</p>	<p>DESIGNED DS</p>	<p>DRAWN KL</p>
<p>CHECKED CS</p>	<p>SHEET NO. 12</p>	<p>PS1</p>

NOTE:
EXPOSE AND VERIFY
PIPING LOCATIONS AND
SIZES BEFORE
PLACEMENT OF NEW
FIBERGLASS TANK.



REV NO.	COMMENT	DATE

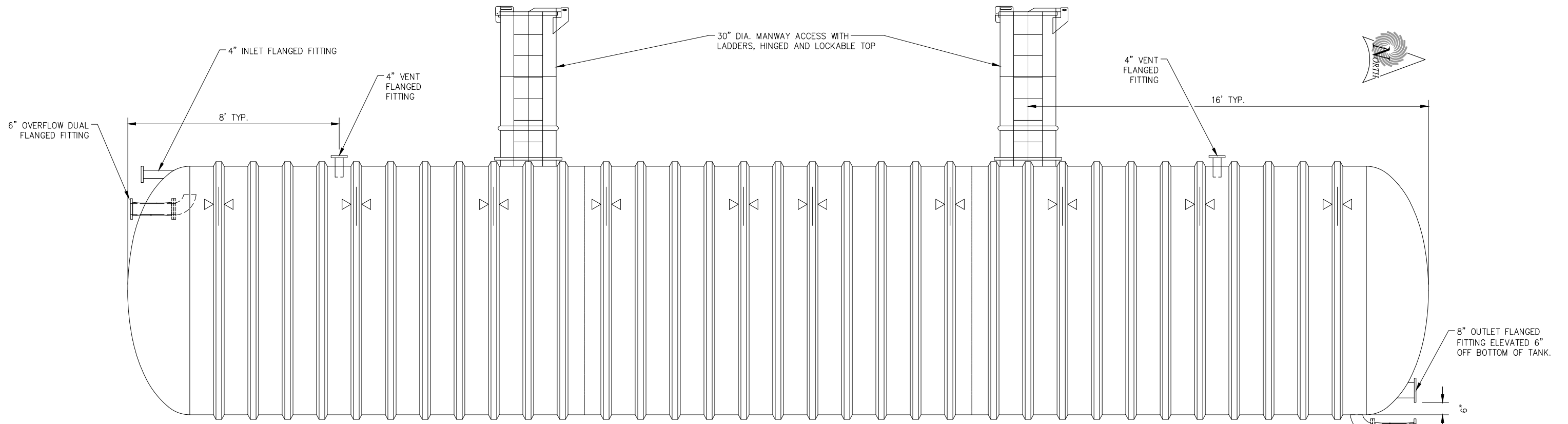


SUNRISE ENGINEERING
635 NORTH MAIN, SUITE 675
RICHFIELD, UTAH 84701
TEL 435.896.8857
www.sunrise-eng.com

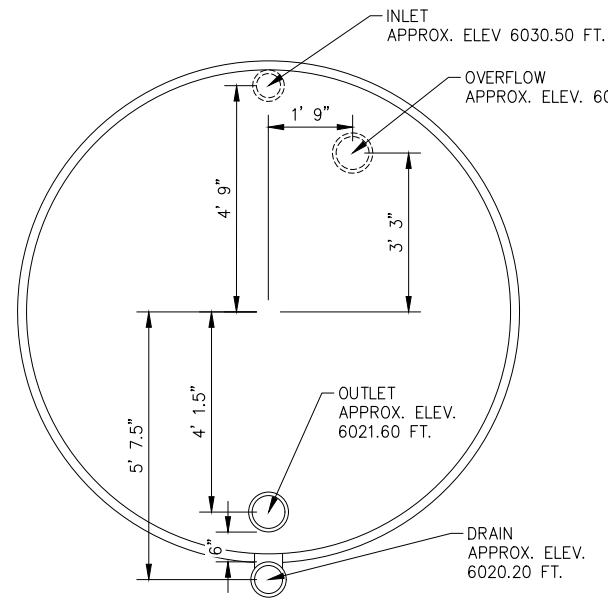
WILSON ARCH WATER & SEWER SSD
WILSON ARCH WATER PROJECT
2023
WEST TANK SITE

SEI NO.	DESIGNED	DRAWN	CHECKED	SHEET NO.	
09132	DS	KL	CS	13	TS1

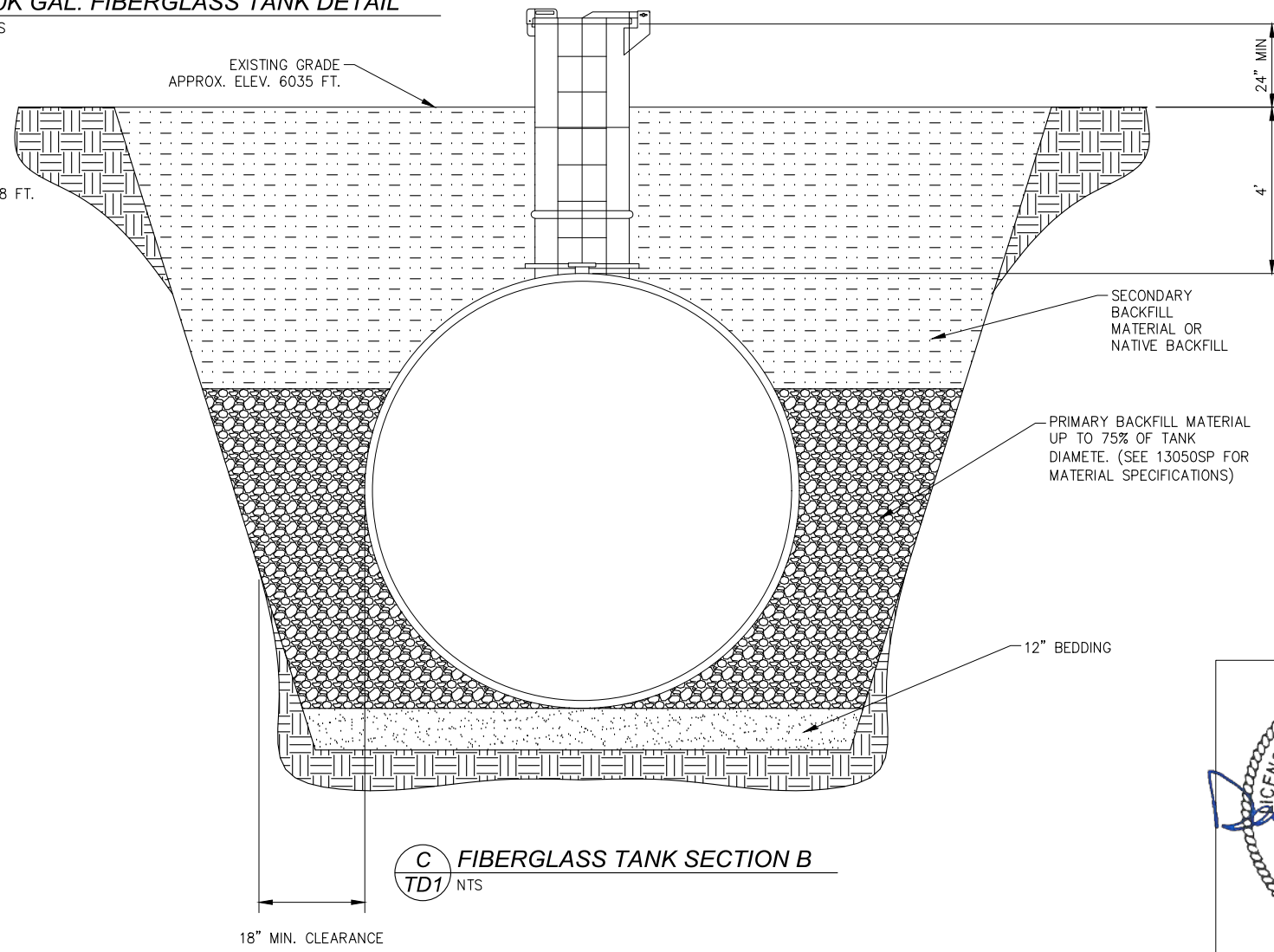
\\SEIFLW2\Projects\Wilson Arch SSD\09132-Wilson Arch Water Project 2023\DWG\Sheets\WASSD 2023 Water Improvements - WS.dwg Nov 29, 2023 8:23am klarose



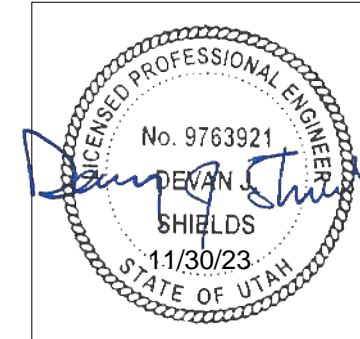
A 30K GAL. FIBERGLASS TANK DETAIL
 TD1 NTS



B FIBERGLASS TANK SECTION
 TD1 NTS

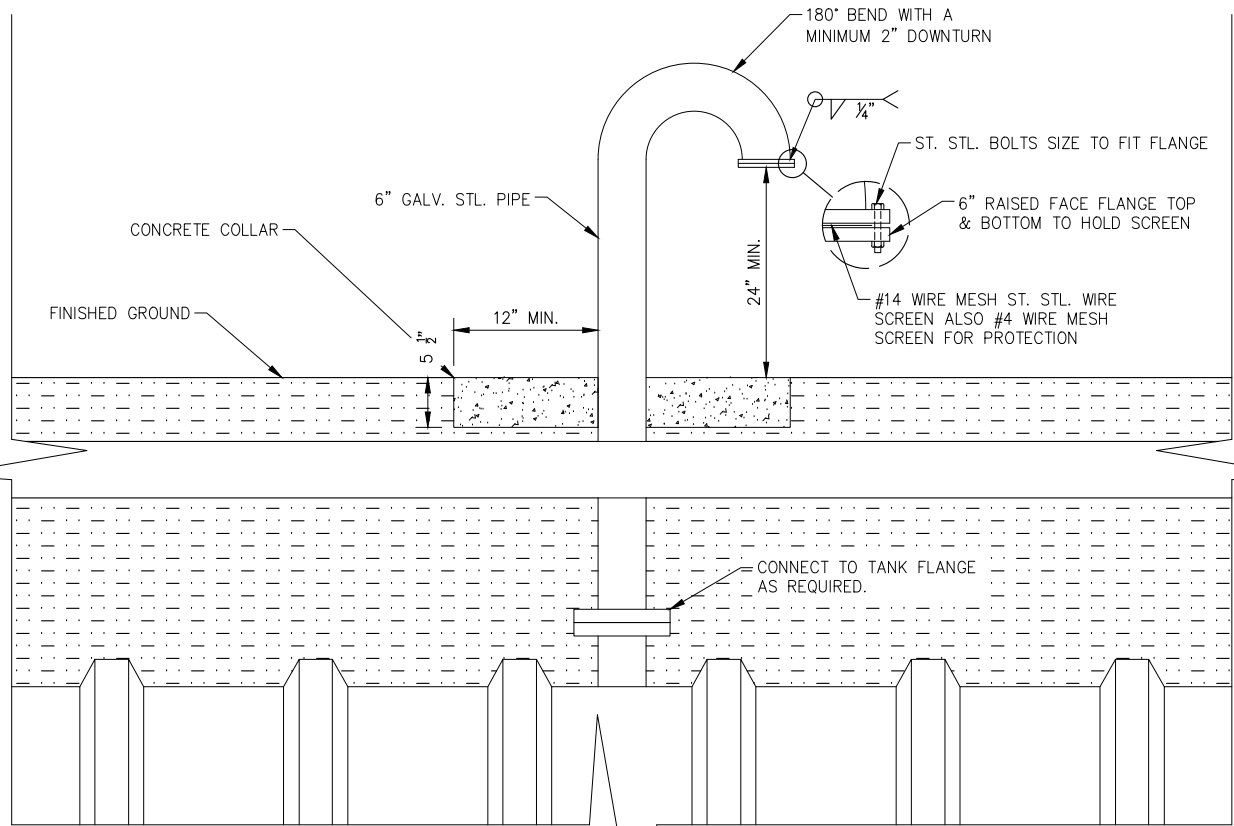


C FIBERGLASS TANK SECTION B
 TD1 NTS

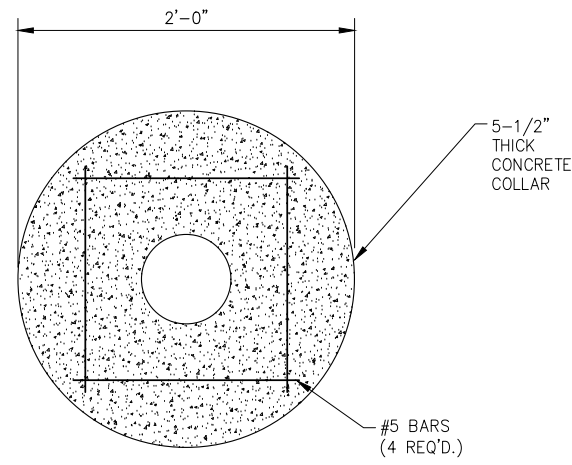


REV. NO.	COMMENT	DATE			
635 NORTH MAIN, SUITE 675 RICHFIELD, UTAH 84701 TEL 435.896.8857 www.sunrise-eng.com					
WILSON ARCH WATER & SEWER SSD WILSON ARCH WATER PROJECT 2023 TANK DETAILS					
SEI NO.	DESIGNED	DRAWN	CHECKED	SHEET NO.	
09132	DS	KL	CS	14	TD1

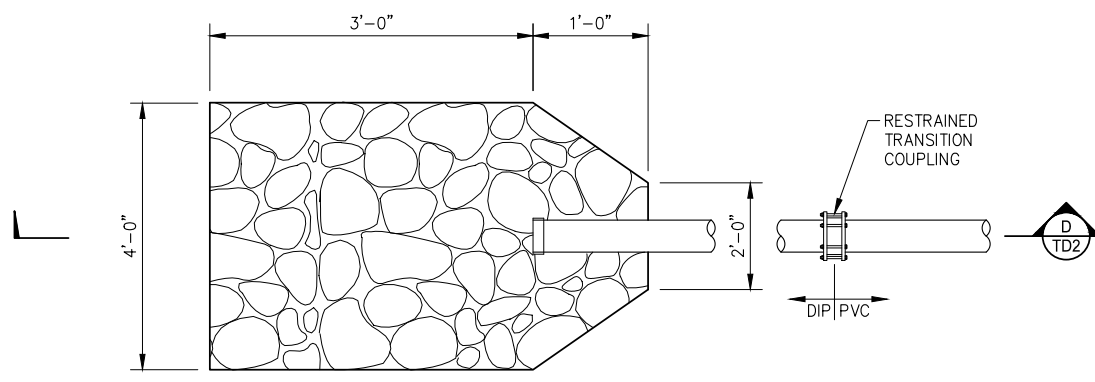
\\SEIFLW2\Projects\Wilson Arch SSD\09132-Wilson Arch Water Project 2023\DWG\Sheets\WASSD 2023 Water Improvements - WS.dwg Nov 29, 2023 8:24am klarose



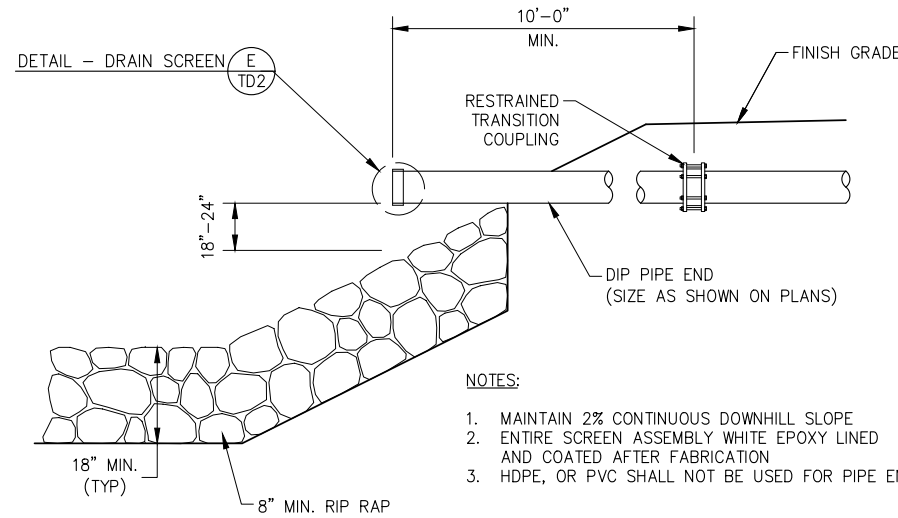
A FIBERGLASS TANK VENTS
TD2 NTS



B CONCRETE COLLAR
TD2 NTS

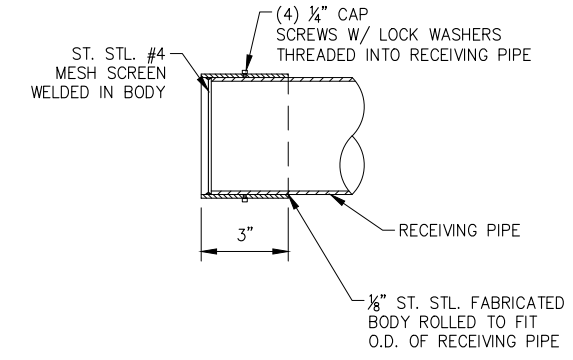


C DETAIL - PIPE END
TD2 NTS

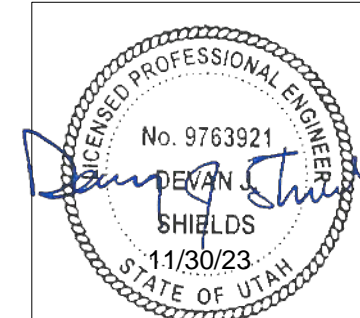


- NOTES:
1. MAINTAIN 2% CONTINUOUS DOWNHILL SLOPE
 2. ENTIRE SCREEN ASSEMBLY WHITE EPOXY LINED AND COATED AFTER FABRICATION
 3. HDPE, OR PVC SHALL NOT BE USED FOR PIPE END

D PIPE END SECTION D
TD2 NTS



E DETAIL - DRAIN SCREEN
TD2 NTS



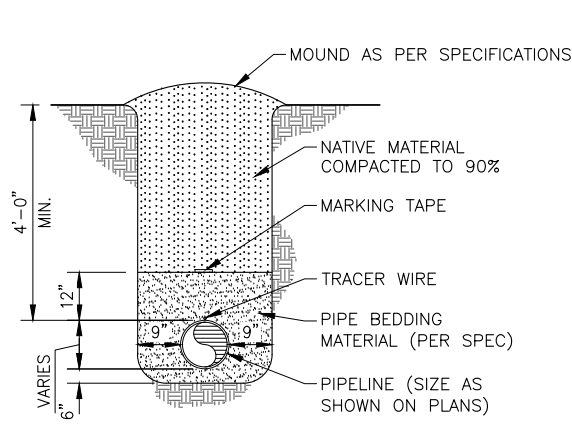
REV. NO.	COMMENT	DATE

SUNRISE ENGINEERING
635 NORTH MAIN, SUITE 675
RICHFIELD, UTAH 84701
TEL 435.896.8857
www.sunrise-eng.com

WILSON ARCH WATER & SEWER SSD
WILSON ARCH WATER PROJECT
2023
TANK DETAILS

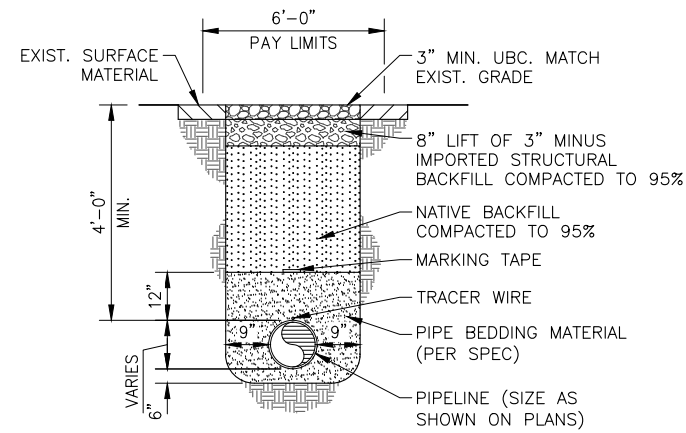
SEI NO.	DESIGNED	DRAWN	CHECKED	SHEET NO.	
09132	DS	KL	CS	15	TD2

\\SEIFLW2\Projects\Wilson Arch Water Project 2023\DWG\Sheets\WASSD 2023 Water Improvements - WS.dwg Nov 29, 2023 8:24am klarose



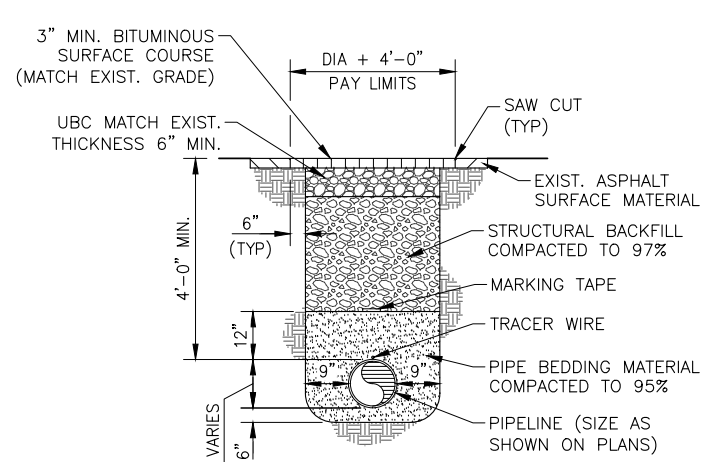
NOTE:
TRENCH DETAIL OUTSIDE OF TRAVELED ROADWAY OR DESIGNATED ROAD RIGHT-OF-WAY.

A DETAIL - TYPICAL TRENCH
TYP NTS



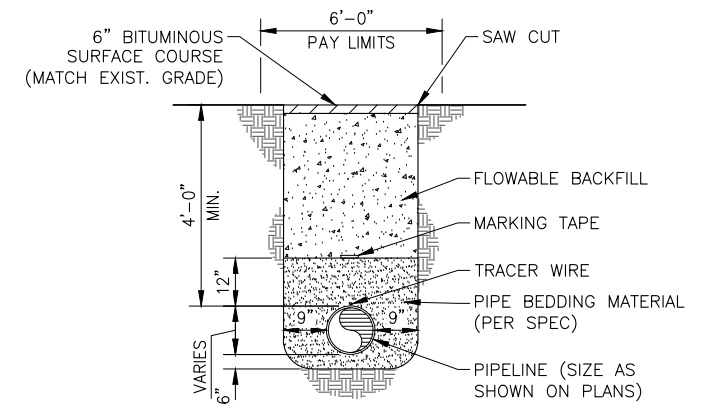
NOTE:
TRENCH DETAIL INSIDE OF GRAVEL ROADWAYS OR DESIGNATED ROAD RIGHT-OF-WAY.

B DETAIL - UNPAVED ROADWAY TRENCH
TYP NTS



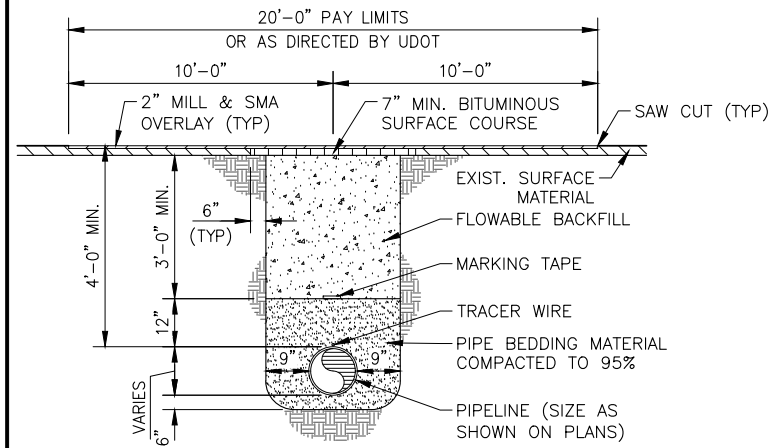
NOTES:
1. TRENCH DETAILS INSIDE OF ASPHALT ROADS.
2. ASPHALT ROADS SHALL BE SAW CUT.

C DETAIL - CITY / COUNTY PAVED ROADWAY TRENCH
TYP



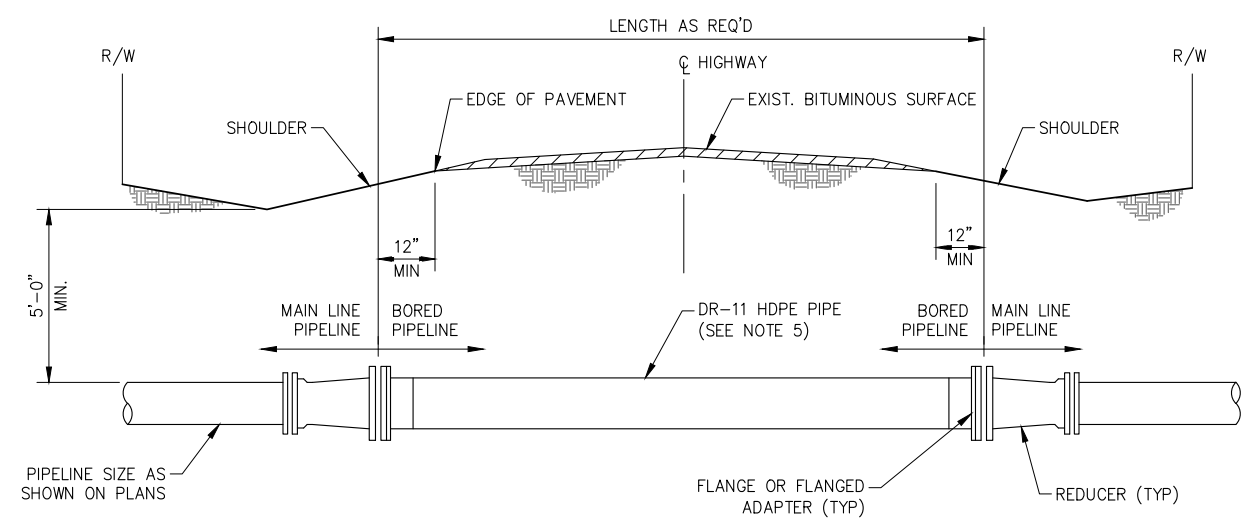
NOTE:
THIS SHALL BE USED ON ALL STATE HIGHWAY CROSSINGS AND WHERE SPECIFICALLY CALLED FOR. CONTRACTOR SHALL OBTAIN PERMIT FROM UDOT PRIOR TO CONSTRUCTION.

D DETAIL - TRENCH W/ FLOWABLE BACKFILL
TYP NTS



NOTE:
1. THIS SHALL BE USED ON ALL TRENCHES CROSSING STATE HIGHWAYS, ENCRANCHING TRAFFIC LANES, AND WHERE SPECIFICALLY CALLED FOR. CONTRACTOR SHALL REFER TO SPECIFICATION 02501SP FOR DESCRIPTION OF TRENCHING REQUIREMENTS.
2. REPAIRS OF BORE PITS OR OTHER NON-TRENCHING EXCAVATIONS ENCRANCHING INTO TRAFFIC LANES SHALL COMPLY WITH THIS DETAIL UNLESS OTHERWISE APPROVED BY UDOT AND THE PROJECT ENGINEER.
3. TACK COAT REQUIRED AT ALL PAVEMENT JOINTS.

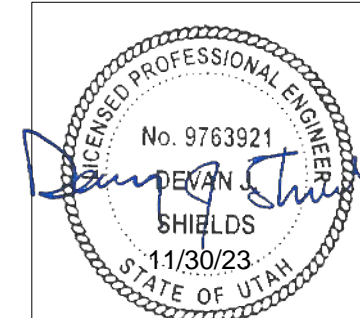
E DETAIL - UDOT TRENCH CROSSING TRAFFIC LANES
TYP NTS



NOTES:
1. ALL WORK SHALL COMPLY WITH REQUIREMENTS FOR CONSTRUCTION ON STATE HIGHWAYS.
2. CONTRACTOR SHALL OBTAIN ENCROACHMENT PERMIT PRIOR TO CONSTRUCTION.
3. CONNECTION OF BORED PIPELINE TO MAIN PIPELINE SHALL BE MADE USING MEGALUG RESTRAINED MJ x FLANGED REDUCER TO FLANGE OR FLANGED ADAPTERS, UNLESS APPROVED OTHERWISE BY THE ENGINEER.
4. THE CONTRACTOR SHALL RESTRAIN ALL JOINTS OF THE BORED PIPELINE AND ALL JOINTS OF THE MAIN LINE 40 FEET EACH SIDE OF THE BORED PIPELINE CONNECTION.
5. BORED PIPELINE SIZE SHALL BE ONE STANDARD PIPE SIZE LARGER IN DIAMETER THAN THE PIPE SIZE CONNECTING TO IT. FOR EXAMPLE, A 6" MAIN PIPELINE WOULD REQUIRE AN 8" DR-11 HDPE PIPELINE UNDER THE ROAD AND AN 8" MAIN PIPELINE WOULD REQUIRE A 10" DR-11 HDPE PIPELINE UNDER THE ROAD, ETC.

F DETAIL - BORING UNDER HIGHWAY
TYP NTS

811 Know what's below. Call before you dig. 1-800-662-4111



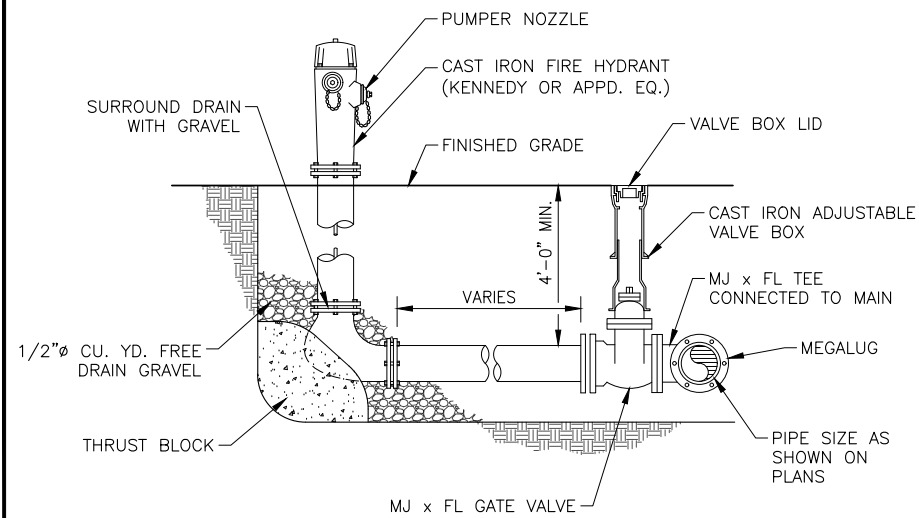
REV NO.	COMMENT	DATE

SUNRISE ENGINEERING
635 NORTH MAIN, SUITE 675
RICHFIELD, UTAH 84701
TEL 435.896.8857
www.sunrise-eng.com

WILSON ARCH WATER & SEWER SSD
WILSON ARCH WATER PROJECT
2023
TYPICAL DETAILS

SEI NO.	DESIGNED	DRAWN	CHECKED	SHEET NO.	
09132	DS	KL	CS	16	D1

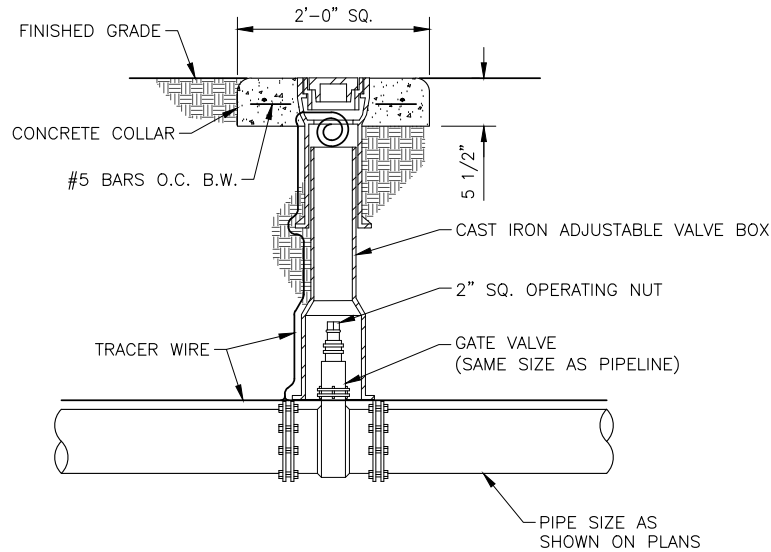
SSD\09132-Wilson Arch Water Project 2023\DWG\Sheets\WASSD 2023 Water Improvements - D.dwg Nov 23, 2023 8:24am Rlarose



NOTE:

FIRE HYDRANT BREAKAWAY FLANGE SHALL BE NO GREATER THAN 5" ABOVE FINISHED GRADE OR 1" BELOW FINISHED/EXISTING GRADE

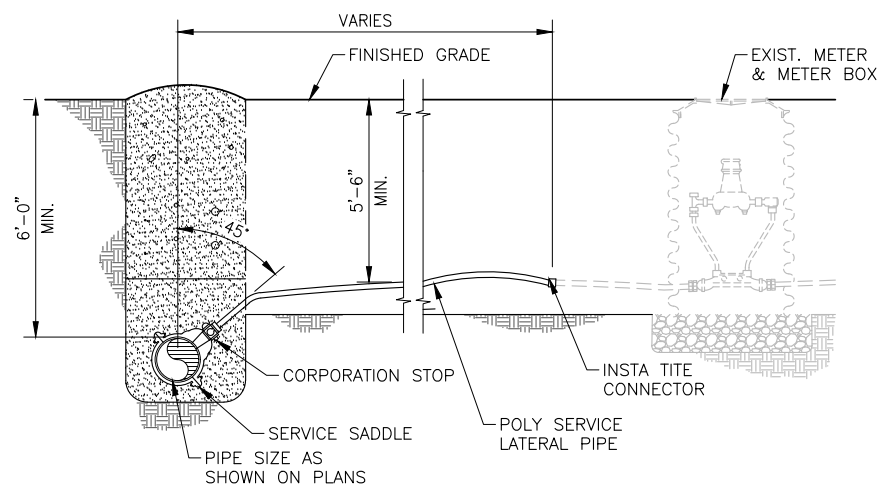
A **DETAIL - FIRE HYDRANT ASSEMBLY**
TYP NTS



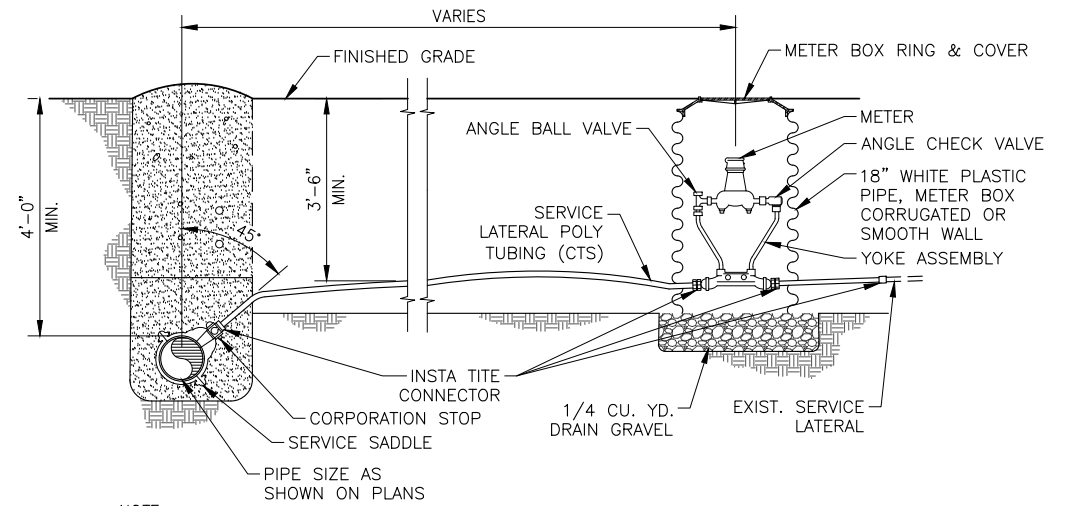
NOTES:

1. ALL VALVES SHALL BE RESTRAINED ACCORDING TO DRAWING DX AND SHALL BE TREATED AS A DEAD END IN BOTH DIRECTIONS.
2. FOR VALVES OVER 48" DEEP ADD VALVE STEM AND VALVE BOX EXTENSIONS AS NECESSARY, FOR NORMAL OPERATION OF VALVE KEY. TRACER WIRE SHALL BE BROUGHT INTO THE VALVE BOX THROUGH HOLE AT BELL. COIL 12" OF TRACER WIRE INSIDE VALVE BOX BELL SECTION.
3. FOR REPLACEMENT VALVES, CUT INTO EXISTING PIPELINES. ALL COUPLINGS SHALL BE RESTRAINED.

B **DETAIL - TYPICAL GATE VALVE**
TYP NTS



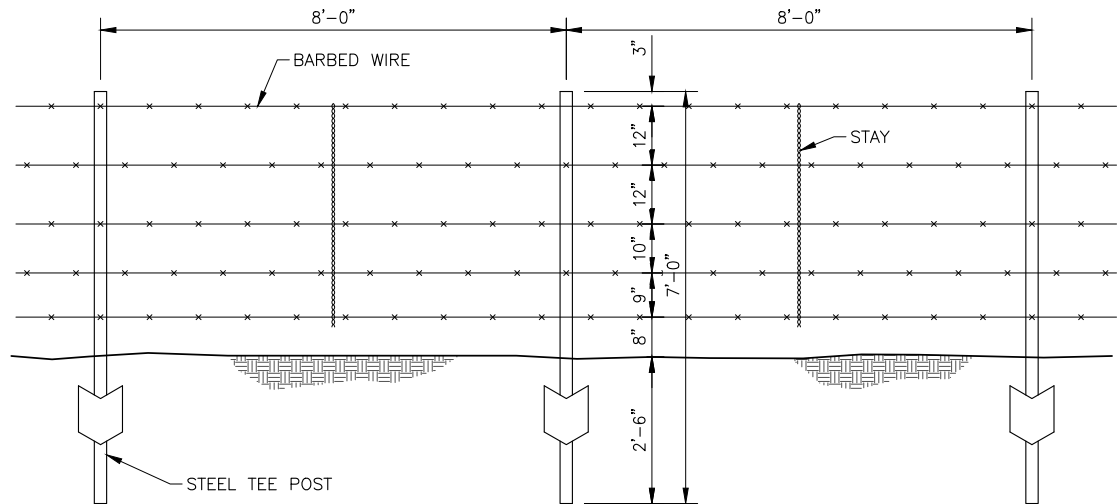
E **DETAIL - RECONNECT EXIST. WATER SERVICE**
TYP NTS



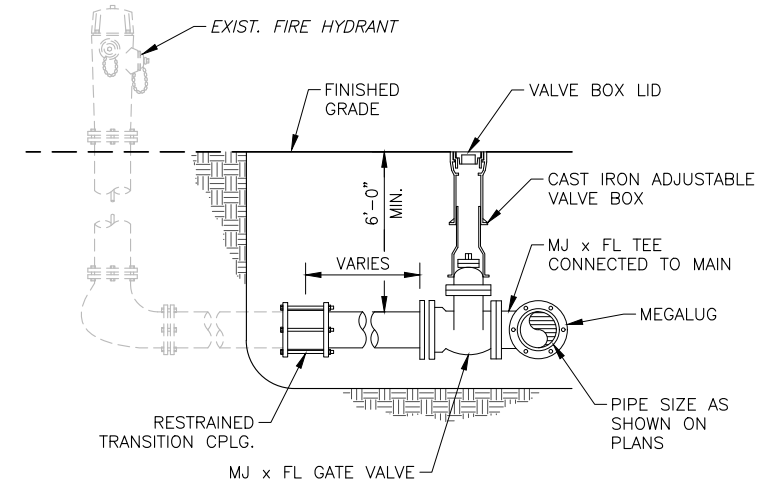
NOTE:

1. ALL SERVICE LATERALS THAT ARE REPLACED ON THE OPPOSITE SIDE OF THE ROAD FROM THE NEW MAIN LINE MUST BE INSTALLED BY PULLING UNLESS DIRECTED OTHERWISE BY THE ENGINEER.
2. ALL NEW SERVICE CONNECTIONS SHALL INCLUDE DUAL CHECK VALVE SETTER ASSEMBLIES.
3. INSTA TITE CONNECTIONS TO EXISTING SERVICE LATERAL TUBING MAY REQUIRE ADAPTERS.

C **DETAIL - NEW WATER SERVICE CONNECTION**
TYP NTS

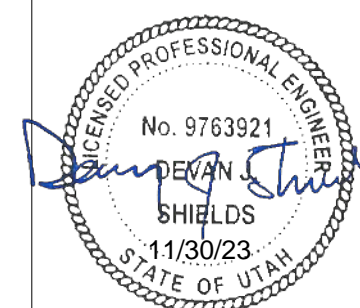


D **DETAIL - STOCK FENCE**
TYP NTS



F **DETAIL - RECONNECT EXIST. FIRE HYDRANT**
TYP NTS

811 Know what's below. Call before you dig. 1-800-662-4111



REV. NO.	COMMENT	DATE

SUNRISE ENGINEERING
635 NORTH MAIN, SUITE 675
RICHFIELD, UTAH 84701
TEL 435.896.8857
www.sunrise-eng.com

WILSON ARCH WATER & SEWER SSD
WILSON ARCH WATER PROJECT
2023
TYPICAL DETAILS

SEI NO.	DESIGNED	DRAWN	CHECKED	SHEET NO.
09132	DS	KL	CS	17

D2

\\SEIFLW2\Projects\Wilson Arch Water Project 2023\DWG\Sheets\WASSD 2023 Water Improvements - D.dwg Nov 23, 2023 8:24am Kiarose

LINE LEGEND

	MAIN PROGRESS LINE
	MINOR PROGRESS LINE
	ELECTRICAL CONNECTION
	DATA LINK (PROTOCOL SPECIFIED)
	PNEUMATIC SIGNAL
	CAPILLARY TUBE
	MECHANICAL LINK
	USER DEFINED

SYMBOL LEGEND

	BALL VALVE
	BUTTERFLY VALVE
	GATE VALVE
	PLUG VALVE
	MOTOR OPERATED VALVE
	THREE WAY VALVE
	CHECK VALVE
	PRESSURE OPERATED VALVE
	BACK PRESSURE REGULATOR INTERNAL TAP
	BACK PRESSURE REGULATOR EXTERNAL TAP
	PRESSURE REDUCING REGULATOR INTERNAL TAP
	PRESSURE REDUCING REGULATOR EXTERNAL TAP
	PRESSURE RELIEF VALVE
	PRESSURE RELIEF VALVE
	PIPE REDUCER
	PUMP
	ROTOMETER
	EJECTOR
	PERISTALTIC PUMP
	MAGNETIC FLOW METER
	TURBINE PROPELLER FLOW METER
	ULTRASONIC FLOW METER
	FILTER / SCREEN
	ORIFICE / DIFFERENTIAL FLOW METER

CONTROL ABBREVIATIONS

MEASURED / INITIATING VARIABLE	FIRST LETTERS		SUCCEEDING LETTERS		
	DESCRIPTION	VARIABLE	READOUT / PASSIVE FUNCTION	OUTPUT / ACTIVE FUNCTION	FUNCTION MODIFIER
A	ANALYSIS		ALARM		
B	BURNER COMBUSTION		USER'S CHOICE	USER'S CHOICE	USER'S CHOICE
C	COMMUNICATION, CONDUCTIVITY			CONTROL	CLOSE
D	DENSITY	DIFFERENCE DIFFERENTIAL			DEVIATION
E	VOLTAGE		SENSOR, PRIMARY ELEMENT		
F	FLOW, FLOW RATE	RATIO			
G	USER'S CHOICE		GLASS, GAUGE, VIEWING DEVICE		
H	HAND				HIGH
I	CURRENT		INDICATE		
J	POWER	SCAN			
K	TIME, SCHEDULE	TIME RATE OF CHANGE		CONTROL STATION	
L	LEVEL		LIGHT	STATUS	LOW
M	MOISTURE, MANUAL, MULTI, MOTOR	OVERRIDE			MIDDLE, INTERMEDIATE
N	USER'S CHOICE		USER'S CHOICE	USER'S CHOICE	USER'S CHOICE
O	OVERLOAD		ORIFICE		OPEN
P	PRESSURE, VACUUM		POINT (TEST CONNECTION)		
Q	QUANTITY	INTEGRATE, TOTALIZE	INTEGRATE, TOTALIZE		
R	RADIATION, RESTRICTION		RECORD		RUN
S	SPEED, FREQUENCY	SAFETY		SWITCH	STOP
T	TEMPERATURE			TRANSMIT	
U	MULTI-VARIABLE		MULTIFUNCTION	MULTIFUNCTION	
V	VIBRATION, MECHANICAL ANALYSIS			VALVE, DAMPER, LOUVER	
W	WEIGHT, FORCE		WELL, PROBE		
X	UNCLASSIFIED, MISCELLANEOUS	X-Axis	ACCESSORY DEVICES, UNCLASSIFIED	EXECUTE	UNCLASSIFIED
Y	EVENT, STATE, PRESENCE	Y-Axis		RELAY, COMPUTING DEVICE	
Z	POSITION, DIMENSION	Z-Axis, SAFETY INSTRUMENTED SYSTEM		DRIVER, ACTUATOR, UNCLASSIFIED FINAL CONTROL ELEMENT	

COMMON IDENTIFIERS

IDENTIFIER	DESCRIPTION	PLC I/O
AE	ANALYTICAL ELEMENT	
AI	ANALYTICAL INSTRUMENT INDICATOR	AI
AT	ANALYTICAL INSTRUMENT TRANSMITTER	AI
FE	FLOW ELEMENT	
FI	FLOW INDICATOR	AI
FIQ	FLOW QUANTITY INDICATOR	DI
FIT	FLOW INDICATING TRANSMITTER	AI
FT	FLOW TRANSMITTER	AI
HS	HAND SWITCH	DI
LAH	LEVEL ALARM HIGH	DI
LAL	LEVEL ALARM LOW	DI
LI	LEVEL INDICATOR	AI
LIT	LEVEL INDICATING TRANSMITTER	AI
LT	LEVEL TRANSMITTER	AI
PIT	PRESSURE INDICATING TRANSMITTER	AI
SI	SPEED INDICATOR (FEEDBACK)	AI
SC	SPEED COMMAND (OUTPUT)	AO
TAH	TEMPERATURE ALARM HIGH	DI
TI	TEMPERATURE INDICATOR	AI
WAH	WEIGHT/FORCE/TORQUE HIGH ALARM	DI
WI	WEIGHT/FORCE/TORQUE INDICATOR	AI
YA	EVENT ALARM	DI
YI	EVENT INDICATOR	DI
YS	EVENT SWITCH	DI
YX	EVENT EXECUTE (RUN COMMAND)	DO
ZI	POSITION INDICATOR (POSITION FEEDBACK)	AI
ZSC	POSITION LIMIT SWITCH CLOSED	DI
ZSO	POSITION LIMIT SWITCH OPEN	DI
ZX	POSITION REFERENCE	AO
ZXC	POSITION EXECUTE CLOSE (CLOSE COMMAND)	DO
ZXO	POSITION EXECUTE OPEN (OPEN COMMAND)	DO

CONTROL ELEMENTS

PRIMARY LOCATION	FIELD MOUNT	PRIMARY LOCATION	AUXILIARY LOCATION
DISCRETE INSTRUMENTS			
SHARED DISPLAY SHARED CONTROL			
COMPUTER FUNCTION			
PROGRAMMABLE LOGIC CONTROL			

FLUID SERVICE CODES

IDENTIFIER	DESCRIPTION
CAR	COMPRESSED AIR
CBW	CLEAN BACKWASH WATER
CFD	CAUSTIC RAW FEED
CL2	CHLORINE
DBW	DIRTY BACKWASH WATER
DRN	PROCESS DRAIN
FEW	FILTER EFFLUENT WATER
FIW	FILTER INFLUENT WATER
NAG	NATURAL GAS
PAR	PROCESS AIR
PWR	POTABLE WATER
STO	STORM DRAIN
VNT	VENT (GENERAL USE)
WWR	WASTEWATER



REV NO.	COMMENT	DATE

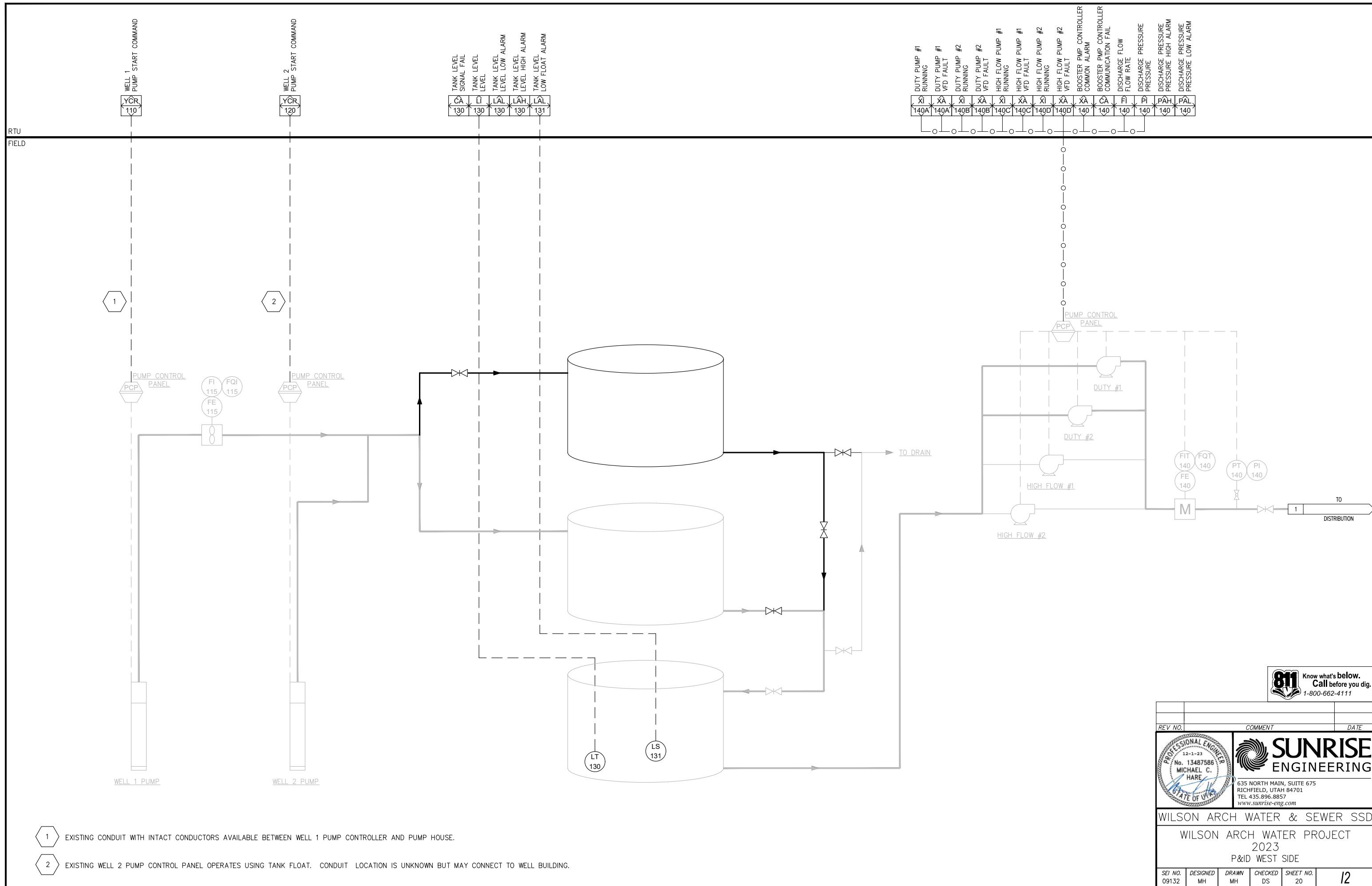
PROFESSIONAL ENGINEER
12-1-23
No. 13487586
MICHAEL C. HARE
STATE OF UTAH

SUNRISE ENGINEERING
635 NORTH MAIN, SUITE 675
RICHFIELD, UTAH 84701
TEL 435.896.8857
www.sunrise-eng.com

WILSON ARCH WATER & SEWER SSD
WILSON ARCH WATER PROJECT
2023
LEGEND

SEI NO. 09132	DESIGNED MH	DRAWN MH	CHECKED DS	SHEET NO. 19	11
------------------	----------------	-------------	---------------	-----------------	-----------


\\SEI\LM2\Projects\Wilson Arch Water Project 2023\SSADA\wssd-x-lbc.dwg Dec 01, 2023 11:31am klarose



DUTY PUMP #1 RUNNING	DUTY PUMP #1 VFD FAULT	DUTY PUMP #2 RUNNING	DUTY PUMP #2 VFD FAULT	HIGH FLOW PUMP #1 RUNNING	HIGH FLOW PUMP #1 VFD FAULT	HIGH FLOW PUMP #2 RUNNING	HIGH FLOW PUMP #2 VFD FAULT	BOOSTER PMP CONTROLLER COMMON ALARM	BOOSTER PMP CONTROLLER COMMUNICATION FAIL	DISCHARGE FLOW RATE	DISCHARGE PRESSURE	DISCHARGE PRESSURE HIGH ALARM	DISCHARGE PRESSURE LOW ALARM
XI 140A	XA 140A	XI 140B	XA 140B	XI 140C	XA 140C	XI 140D	XA 140D	XA 140	CA 140	FI 140	PI 140	PAH 140	PAL 140


TANK LEVEL SIGNAL FAIL	TANK LEVEL	TANK LEVEL LOW ALARM	TANK LEVEL HIGH ALARM	TANK LEVEL LOW FLOAT ALARM
CA 130	I 130	LAL 130	LAH 130	LAL 131

- 1 EXISTING CONDUIT WITH INTACT CONDUCTORS AVAILABLE BETWEEN WELL 1 PUMP CONTROLLER AND PUMP HOUSE.
- 2 EXISTING WELL 2 PUMP CONTROL PANEL OPERATES USING TANK FLOAT. CONDUIT LOCATION IS UNKNOWN BUT MAY CONNECT TO WELL BUILDING.



Know what's below.
Call before you dig.
1-800-662-4111

REV. NO.	COMMENT	DATE

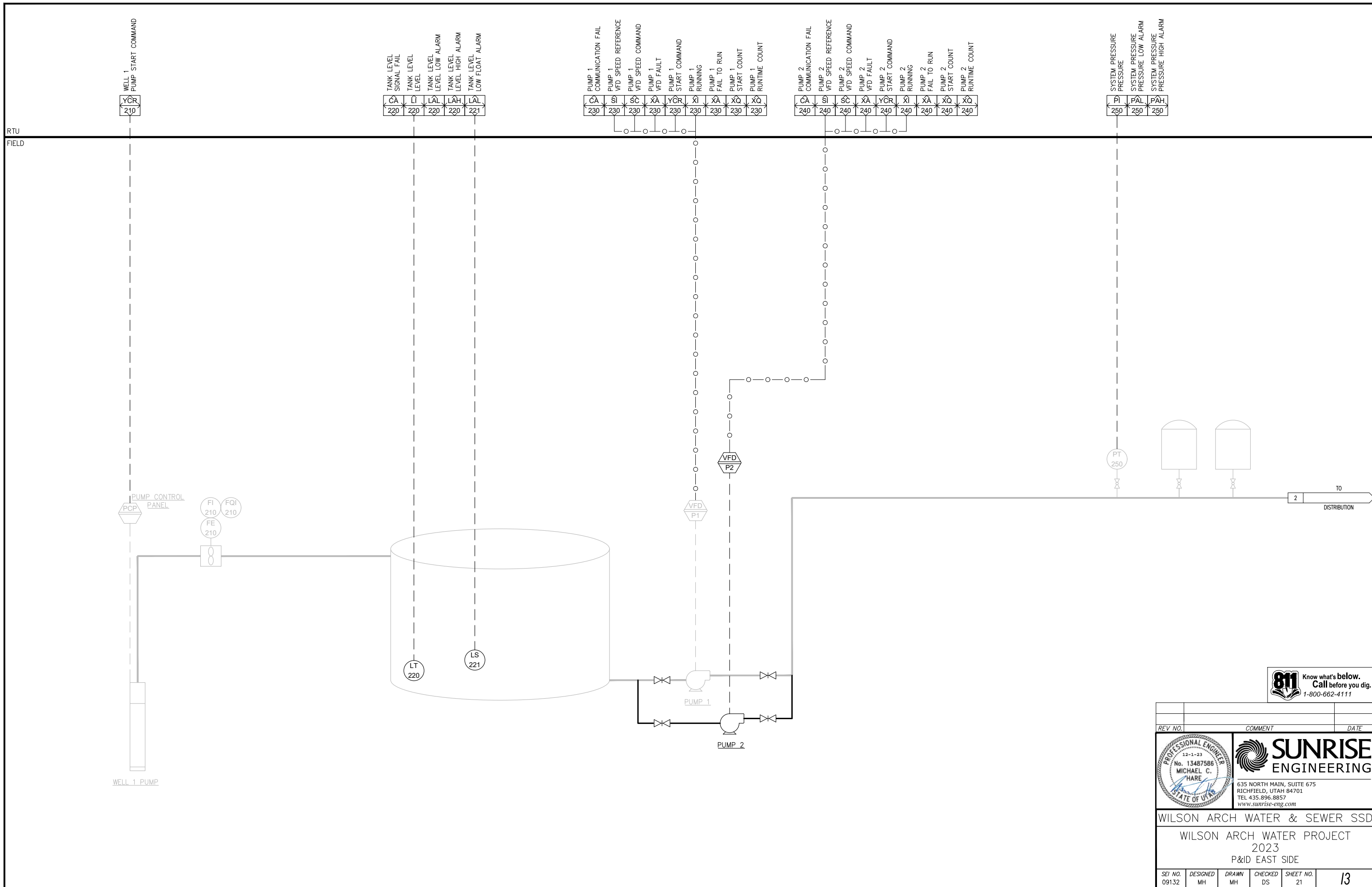


SUNRISE ENGINEERING
635 NORTH MAIN, SUITE 675
RICHFIELD, UTAH 84701
TEL 435.896.8857
www.sunrise-eng.com

WILSON ARCH WATER & SEWER SSD

WILSON ARCH WATER PROJECT
2023
P&ID WEST SIDE

SEI NO. 09132	DESIGNED MH	DRAWN MH	CHECKED DS	SHEET NO. 20	12
------------------	----------------	-------------	---------------	-----------------	-----------



811 Know what's below.
Call before you dig.
1-800-662-4111

REV NO.	COMMENT	DATE

PROFESSIONAL ENGINEER
12-1-23
No. 13487586
MICHAEL C. HARE
STATE OF UTAH

SUNRISE ENGINEERING

635 NORTH MAIN, SUITE 675
RICHFIELD, UTAH 84701
TEL 435.896.8857
www.sunrise-eng.com

WILSON ARCH WATER & SEWER SSD

WILSON ARCH WATER PROJECT
2023
P&ID EAST SIDE

SEI NO. 09132	DESIGNED MH	DRAWN MH	CHECKED DS	SHEET NO. 21	13
------------------	----------------	-------------	---------------	-----------------	-----------

\\SEIFLM2\Projects\Wilson Arch SSD\09132-Wilson Arch Water Project 2023\SSADA\wsssd-x-l&c.dwg Dec 01, 2023 11:31am klarose